

FREE

just

ISSUE 107

BEVERLEY

IT'S YOUR MAGAZINE



PINOCCHIO A PANTO ADVENTURE

NEWS, WHAT'S ON, LIFESTYLE, FEATURES, PUZZLES, PHOTOS & MORE

Wishing you a very Merry Christmas and a Happy New Year from the Stipendia team!



**Improve business performance -
outsource your payroll**

Payroll Outsourcing Benefits

- ✓ Cost reduction
- ✓ Better staff productivity
- ✓ High accuracy & reliability
- ✓ e-payslips direct to employees via our app
- ✓ A named personal contact
- ✓ Added value services including HR & Benefits in Kind
- ✓ Useful online information

to arrange a **FREE** meeting
call us on: **0845 308 2288**
or visit
www.stipendia.org.uk



Stipendia Payroll Solutions



@StipendiaPay

6/7 PINOCCHIO - A PANTO ADVENTURE



4 ISLAY BLOOM



16 SANDRA STAPLES



18 HOME INSTEAD



20/21 BEVERLEY AT CHRISTMAS



24 LOOK NATURAL



37 LENNY'S TREE



Contributors:

Julian Minshall, Olivia Peace, Rich Manville, Mandy Aitken, Cliff Baillie, Jo Bridgeman, Andrew Cooper, Shane Cooper, Fran Dunning, ert, Zoe Gower, Josh Harrison, Allyson Kent, Amanda McConnell, Lewis Northen, Navigation Wealth Management, Colin Raynor, Tony Wallis, Sam Walton, and Nathan Wilson.

REMEMBER! If you see examples of anti-social behaviour or other types of low-level crime, do report it to the appropriate authorities. **POLICE - Emergency 999, Non-urgent 101.**

ANTI-SOCIAL BEHAVIOUR (East Riding of Yorkshire Council) - 01482 393939.

The magazine is available from outlets in Beverley and surrounding areas.

Disclaimer - All the information provided was correct at the time of going to print.

ISSN 2754-9216



'Community Publication Award'
Shortlisted Nominee
2017 & 2018



REYTA
Remarkable East Yorkshire
Award Nominee 2016
'Best Newcomer'



Please pass your Just Beverley on or recycle it responsibly.
Printed by: Jadan Press.

www.justbeverley.co.uk

just BEVERLEY

DECEMBER LETTER FROM THE EDITORS



What a start to Christmas! Have a look at the photos from the Flemingate Switch On, everyone in the festive spirit "Oh Yes They Are". Now we can enjoy the magic as the Christmas lights and the shop windows brighten up the streets. "It's Christmas!"

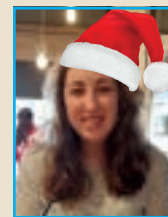
Whether you enjoy a night out at ert to watch 'Toad on the Wolds' or enjoy the Parkway Panto, 'Pinocchio' produced by TaleGate Theatre Productions, we are sure you will get into the Christmas Spirit.

It's always difficult to know what to buy family and friends at Christmas and I am no different. It's always "What do you want for Christmas Dad"? The question always reminds me of the times when I asked my Dad the same question. Without doubt it was a surprise gift! It's just great to have the family around at Christmas and to enjoy those special times together.

This year why not take time out to listen, pick up on conversations or make something special, draw a picture, frame a family photo or a special moment photo. These are the gifts that last forever, creating memories.

As you read through our Christmas publication, we hope it brings a smile, a bit of laughter, education and fun to your Christmas.

Have a Merry, Happy and Healthy Christmas.
Julian.



Happy December readers! With the Christmas lights switched on, the decorations going up, it's time to start selecting your favourite Christmas films and get out the family festive fun games. Or laugh at the stories from Christmas past, the fun times

growing up, stories the children will remember forever and a day.

What is my favourite thing to do at Christmas? Simple - consume as much hot chocolate as possible, enjoy a brisk walk and catch up with friends. Without doubt Christmas is the time to catch up with family and friends.

As always but especially at this time of the year, wrap up, stay warm, stay safe and have a very Merry Festive Season and a great Christmas.
Olivia.

GET IN TOUCH WITH US:

Website: justbeverley.co.uk

Email: info@justbeverley.co.uk

Telephone: 01482 679947

Facebook: [facebook.com/justbeverley](https://www.facebook.com/justbeverley)

If you would like copies for your business to distribute to staff and customers, call Just Beverley on **01482 679947.**

just BEVERLEY

A CHRISTMAS MESSAGE FROM THE BEVERLEY NEIGHBOURHOOD POLICING TEAM

Christmas for many people is a happy time of year, and an opportunity to enjoy spending some quality time relaxing with family and friends - and that is as it should be.

However, disappointingly, this is also a time of year when we see spikes in crimes such as domestic abuse, theft, public order offences and drink and drug driving. So as well as wanting to wish you all a very happy Christmas from myself and the Beverley Neighbourhood Policing team, I would also like to offer a reminder to not drink and drive. It is so easy to plan ahead and make alternative arrangements to get home and where this is possible.

There is simply no excuse to put your own or somebody else's life at risk by making a decision to drive whilst under the influence, I have seen this devastate numerous families over the years and it is simply not worth it.

As well as of course enjoying yourselves ensure you look after each other after those works Christmas parties, make sure everyone gets home safely at the end of the evening. We will look forward to seeing you all over the Christmas period and in the New Year!

Best Wishes, Beverley Neighbourhood Policing Team



VET THERAPY, TO BENEFIT ANIMALS AND OWNERS

White Rose Vet Physiotherapy, (horse and dog physiotherapy), offers numerous benefits for both animals and their owners at home.



The convenience of in-home sessions reduces stress for the animals, promoting a comfortable and familiar environment. Physiotherapy enhances overall well-being by addressing musculoskeletal issues, improving flexibility, and aiding in injury recovery.

When Isabel and the White Rose Team look at your horse or dog, the treatment plan caters to your pets specific needs, ensuring a tailored approach to each animal's condition.



Owners, if required, can actively participate in the process, fostering a deeper bond with their pets and gaining valuable knowledge about preventive care.

Additionally, at-home sessions minimise transport-related stress for animals, making the rehabilitation process more seamless and effective.

Overall, home-based physiotherapy contributes to the holistic health and happiness of beloved animal companions.

To learn more contact
Izzy Heuck - 07887 605436
izzy@whiterosevetphysio.co.uk

Sarah Keith - 07855 949783
sarah@whiterosevetphysio.co.uk

Lois Tomlinson - 07581 485712
lois@whiterosevetphysio.co.uk

Web: www.whiterosevetphysio.co.uk

Facebook - www.facebook.com/whiterosevetphysio



NEW TO BEVERLEY THIS CHRISTMAS, "ISLAY BLOOM"

Islay Bloom, known as 'the shop that smells wonderful', is new to Beverley.

One of several independent businesses located on Dyer Lane, it was launched in April 2023 by Canadian-born Marnie Taylor. She dreamed of creating a lifestyle boutique where the products are hand-picked & heart-curated.

With an eye for design and attention to detail, Islay Bloom brings together interior products, gifts, and fashion that are just that little bit different from the rest. They are sourced in collaboration with independent makers and suppliers worldwide. The team believes in spreading a little kindness every day.

Marnie, manager Lisa, and associate Kerry look forward to giving you a stress-free, relaxed shopping experience with the warmest of welcomes. Every detail is checked and nothing is too much trouble. Come pop in and explore this hidden gem! Islay Bloom owner, Marnie Taylor, approached Charlotte Eldred, illustrator and



window dresser (seen here trying out her angel wings) to transform their shop windows, and the reaction from the public has been beyond expectations.

Marnie mentioned, "Following the reaction of our Window Angel created by Charlotte we have decided to launch a Christmas Competition and look forward to the entries coming in and reading the captions. Hopefully the designed window art will leave a lasting impression on the passersby".

COMPETITION

Islay Bloom Christmas Angel Competition

Win a Christmas gift basket valued at £40. To enter, come to the shop, take a photo of yourself with our angel wings, caption it, and share to **@FB Islaybloom** or **@IG Islaybloombeverley** for a chance to win. The winner will be based on the best caption and announced on social media on Dec 18th. Good Luck and Merry Christmas.



A CHRISTMAS MESSAGE FROM THE RT. HON. GRAHAM STUART MP

As we reach Christmas, I'd like to take a moment to think about some of the people who I've had the privilege to meet, and who help make Beverley the wonderful place it is.

People like Jo Ramsay who runs the Cherry Tree Centre, which has done so much for our community, from running a foodbank to a youth club. Jo is a wonder, and a pillar of Beverley.

Paul Coe is an unassuming sort of person, and alongside Beverley Wombles he literally keeps our town clean. I had a great day out with the Wombles and can't recommend it enough.

Ali Tekce, Beverley's prolific restaurateur, organised the town's response to the earthquake in Turkey earlier this year. He did such a great job with his toy drive he was visited by the Ambassador.

Leon Myers runs Swinemoor Primary School like a precision machine. It was my pleasure to meet some of their RE Ambassadors earlier this year and see just how special the school is.

Or Sue Crowther, who I worked with on the railway crossing at England Springs. A champion for her community, and as nice a person as you could hope to meet.

There are many more, but this Christmas, I'm thankful for everyone who makes our town the kind, friendly place we all know it to be. Merry Christmas.



LEWIS NORTHEN FUNERAL DIRECTORS ANNUAL CHRISTMAS MEMORIAL SERVICE

Lewis Northen Funeral Directors will be holding their Annual Christmas Memorial Service on Wednesday 20th December 2023, 6.30pm at Beverley Minster.

The Memorial Service will be an uplifting service to commemorate the lives of those who have passed away during recent times. The service will cover both religious and non religious aspects and this is hoped to provide some comfort during the festive period as we mourn the loss of loved ones no longer with us.

Lewis mentioned, "We will sing some Christmas carols, have moments of reflection and also light



candles in memory of our loved ones who are at rest. We welcome all who would wish to attend".

If you are going along to the memorial service please let Lewis Northen Funeral Directors know so they have an idea of numbers.

Telephone **01482 888658** or email info@lewisnorthenfuneraldirectors.co.uk.

Following the memorial service, complimentary refreshments will be available and everyone is welcome to stay.

BEVERLEY PHOTOGRAPHIC SOCIETY - DECEMBER'S PROGRAM

Tuesday 5th December - 7pm at the Rose and Crown. Judging and entry selection for the Norman Trophy. Judge Andrew Chandler.

Tuesday 12th December - 7pm at the Rose and Crown. End of year get together for a fun night. Cheese and biscuits followed by a quiz.

Christmas break - Wishing all our members old and new a very Merry Christmas and a Happy New Year. Keep on snapping.

Tuesday 9th January - Meet King William Statue, HU1 1RT, at 11am for some atmospheric photos. Subject to change.

Tuesday 16th January - Meet 7pm at the Rose and Crown for the Natural History print competition.

Tuesday 23rd January - Meet 7pm at the Rose and Crown for the second part of Tracey Lunds Wildlife Photography.

Tuesday 30th January - Meet 7pm at the Rose and Crown. Members fun digital images.

Sunday 4th February - Meet 9.45 at the Park and Ride, Grimston Bar, York. Bus into town to photograph the York Ice Trail.

The aim of the club is to share knowledge and experience amongst all members in a friendly atmosphere.

We encourage our member's interests in all aspects of photography by means of various events and exhibitions.

In Winter competitions are regularly held amongst our members and inter-club for both prints and projected digital images.

In Summer we have a full program of visits, photo walks, club nights, and an exhibition.

If you are interested in joining the club, please come along and meet the members. No commitments.

We are members of the Yorkshire Coastal Photographic Group, the Yorkshire Photographic Union and affiliated to the Photographic Alliance of Great Britain.
<https://ypu.org.uk/>

If you are interested in photography please come along and meet the members. No commitments. More information and contact details can be found on the following sites.

<https://beverleyphotographic.wixsite.com/club>

<https://www.facebook.com/groups/beverleyphotographyclub>

<https://www.flickr.com/groups/1095249@N24/>



Embracing the festive spirit, watching "Pinocchio: The Panto" during Christmas is a delightful experience for all ages. The classic tale takes on a whimsical, humorous twist with vibrant characters, catchy songs, and interactive elements that engage the audience. The enchanting set design, colorful costumes, and lively choreography create a magical atmosphere, transporting spectators to a world of fantasy and joy.

Audiences can revel in the laughter-inducing antics of Pinocchio, Geppetto, and the mischievous puppeteer, adding a unique flavor to the traditional pantomime experience. With its infectious energy, witty humor, and heartwarming moments, "Pinocchio: The Panto" becomes a cherished part of the Christmas festivities, leaving spectators with lasting memories and a sense of warmth that perfectly complements the season's festive spirit.

It's the Pinocchio Quiz, "Oh yes it is"!!! A quiz you can carry out with all the family. Do you match Pinocchio's answers to the following questions? Did Pinocchio tell the truth or a lie? How will you get on?

Pinocchio answered the following questions. His answers are highlighted in **bold red**. So was Pinocchio telling the truth or was it a lie?

Pinocchio do you prefer...

1. Christmas Day or **New Year's Day**
2. Spagboli or **Jiminy Cricket**
3. **Songs** or Slapstick
4. **Building a Snowman** or Playing Snowballs
5. Angel on a Christmas Tree or **a Christmas Star**
6. Christmas Cake or **Christmas Pudding**
7. Do you leave carrots for - Father Christmas or **Rudolph**
8. **Sledging** or Skiing
9. **Holiday Play** or School Work
10. Brown Sauce or **Red Sauce** on Christmas Dinner
11. **Fizzy Orange** or Lemonade
12. **Brussel Sprouts** or Broccoli
13. Box of Chocolates or **Selection Box**
14. **Christmas Film** or Adventure Film
15. **Board Games** or Computer Games
16. Woolly Hat or **Beanie**
17. To be a wooden puppet or **a real boy**
18. Give Gifts or **Receive Gifts**
19. Brown Shoes or **Red Shoes**
20. **Live Panto** or TV Cartoon
21. Read a book or **watch Disney+**
22. Funny Joke or a **Silly Joke**
23. The best thing about Christmas is Gifts or **Hugs**



Go to page 38 to discover whether Pinocchio answered with a lie or answered with the truth. Was Pinocchio's nose longer or the same size?

E, "OH YES IT IS!"



COMPETITION WINNERS

Our congratulations go to **the Hall family** who won the competition for family tickets to the Panto. "Oh yes they did".



PERFORMANCE TIMES

- Saturday 16th December - 12pm & 4pm
- Sunday 17th December - 12pm & 4pm
- Saturday 23rd December - 12pm & 4pm
- Saturday 24th December - 10am, 1pm & 4pm
- Tuesday 26th December - 12pm & 4pm
- Wednesday 27th December - 12pm & 4pm
- Thursday 28th December - 12pm & 4pm
- Friday 29th December - 12pm & 4pm
- Saturday 30th December - 12pm



EVERY THURSDAY

(Doors open 9.30am)

Join us for a free brew and enjoy some great films on Beverley Parkway's Big Screen. Only £4.50 (unless stated otherwise) with drink and biscuits included. Aimed at 55s & over. Films subject to change.

Thursday 7th December -

Equalizer 3

Starring: Denzel Washington, Dakota Fanning.

Theatre Camp

Starring: Noah Galvin, Molly Gordon.

Killers of the Flower Moon (Tickets £6)

Starring: Leonardo DiCaprio, Robert De Niro.

Thursday 14th December -

The Old Oak

Starring: Ebla Mari, Dave Turner.

A Haunting in Venice

Starring: Kyle Allen, Kenneth Branagh.

Killers of the Flower Moon (Tickets £6)

Starring: Leonardo DiCaprio, Robert De Niro.

Thursday 21st December -

A Haunting in Venice

Starring: Kyle Allen, Kenneth Branagh.

It's a Wonderful Life

Starring: James Stewart, Donna Reed.

Napoleon (Tickets £6)

Starring: Joaquin Phoenix, Vanessa Kirby.

Thursday 28th December -

The Old Oak

Starring: Ebla Mari, Dave Turner.

The Creator

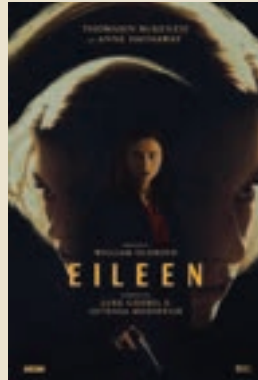
Starring: John David Washington, Gemma Chan.

Napoleon (Tickets £6)

Starring: Joaquin Phoenix, Vanessa Kirby.



These are the films scheduled to open in December - all are subject to change. Check out up-to-date cinema listings at www.justbeverley.co.uk/cinema-times



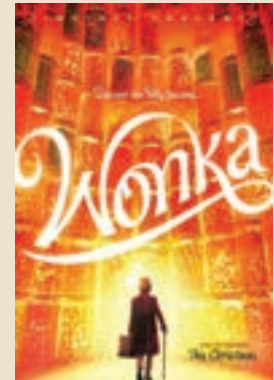
Eileen

From 1st December
Starring: Thomasin McKenzie, Shea Whigham, Sam Nivola.



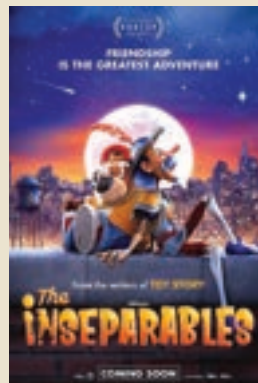
Anatomy of Fall

From 1st December
Starring: Sandra Hüller, Swann Arlaud, Milo Machado Graner.



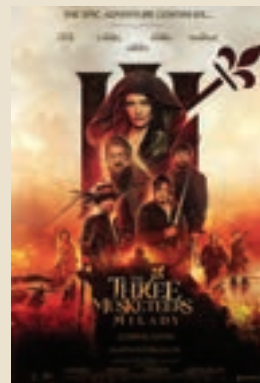
Wonka

From 8th December
Starring: Timothée Chalamet, Olivia Colman, Hugh Grant.



The Inseparables

From 8th December
Starring: Monica Young, Danny Fehsenfeld, Olivier Paris.



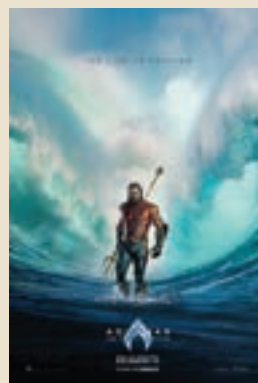
Three Musketeers Milady

From 15th December
Starring: Jacob Fortune-Lloyd, Eva Green, Vincent Cassel.



Godzilla Minus One

From 15th December
Starring: Minami Hamabe, Ryunosuke Kamiki.



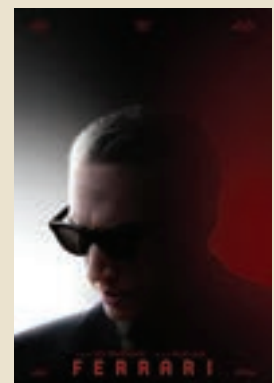
Aquaman and the Lost Kingdom

From 21st December
Starring: Jason Momoa, Ben Affleck, Patrick Wilson.



Next Goal Wins

From 26th December
Starring: Michael Fassbender, Oscar Kightley.



Ferrari

From 26th December
Starring: Shailene Woodley, Patrick Dempsey, Adam Driver.

YOUR LOCAL INDEPENDENT CINEMA



JOIN US FOR SOME GREAT FILMS AND BIG LIVE SHOWS THIS WINTER

WONKA

Based on the extraordinary character at the centre of Charlie and the Chocolate Factory, the jewel in the Roald Dahl crown and one of the best-selling children's books of all time, "Wonka" tells the wondrous story of how the world's greatest inventor, magician and chocolate-maker became the beloved Willy Wonka we know today.

From Friday 8th December



THE INSEPARABLES

Discover the true power of imagination in this heart-warming and epic buddy adventure from the writers of Toy Story. Don, a puppet with boundless imagination, and DJ Doggie Dog, a forsaken stuffed animal, unexpectedly cross paths in New York City and pair up against all odds for an epic adventure of friendship in the big city.

From Friday 8th December



FERRARI

It is the summer of 1957. Behind the spectacle of Formula 1, ex-racer Enzo Ferrari is in crisis. Bankruptcy threatens the factory he and his wife, Laura built from nothing ten years earlier. Their volatile marriage has been battered by the loss of their son, Dino a year earlier. Ferrari struggles to acknowledge his son Piero with Lina Lardi. Meanwhile, his drivers' passion to win pushes them to the edge as they launch into the treacherous 1,000-mile race across Italy, the Mille Miglia.

From Tuesday 26th December



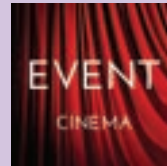
LIVE AT PARKWAY

Saturday 16th December - Saturday 30th December - various times, see What's On page for listings -

Pinocchio - A Panto Adventure

Wish upon a star in this magical family pantomime 'Pinocchio'. Parkway is once again proud to present a festive panto, live on stage, in association with TaleGate Theatre Productions. Follow our young hero 'Pinocchio' on an adventure of a lifetime as he learns how to become a real boy.

Tickets: £15 standard. £13 concession.
£48 Family ticket (2 adults, 2 children).



Event cinema offers something a little different to mainstream films. Live and pre-recorded shows beamed in via satellite from all over the world. Here are the latest live streams that you can enjoy on the big screen at Parkway Beverley.

**Saturday 2nd December, 12pm &
Sunday 3rd December, 2pm -**

Andre Rieu's White Christmas

For many, Christmas is the most wonderful time of the year. This year it will come early with Andre Rieu's cinema special White Christmas, a celebration you will never forget.

Saturday 9th December, 5.55pm -

MET Opera: Florencia en el Amazonas

Sung in Spanish and inspired by the magical realism of Gabriel García Márquez, Mexican composer Daniel Catán's 1996 opera focuses on an opera diva, Florencia Grimaldi.

Tuesday 12th December, 7.15pm -

Royal Ballet: The Nutcracker

Join Clara at a delightful Christmas Eve party that becomes a magical adventure once everyone else is tucked up in bed. Marvel at the brilliance of Tchaikovsky's score, as Clara and her enchanted Nutcracker fight the Mouse King and visit the Sugar Plum Fairy and her Prince in the glittering Kingdom of Sweets.

Saturday 6th January 2024, 5.55pm -

MET Opera: Nabucco

Ancient Babylon comes to life in a classic Met staging of biblical proportions. Baritone George Gagnidze makes his Met role debut as the imperious king Nabucco.

Wednesday 24th January 2024, 6.45pm -

Royal Opera: Rusalka

Rusalka, a water spirit, lives with her family in the pure waters of the forest lake. When she falls in love with a Prince, she sacrifices her voice and leaves her home.

Thursday 25th January 2024, 7pm -

NT Live: Dear England

Joseph Fiennes plays Gareth Southgate in James Graham's gripping examination of nation and game. The country that gave the world football has since delivered a painful pattern of loss. Why can't England's men win at their own game?

I'VE BEEN THINKING... SAYS COLIN RAYNOR

I first started writing this column in December 2016, so yes, it has been seven years since I began sharing my thoughts with you and some forty five thousand words later here we are again at the end of another year.

In that first article I wrote about names and how important they are to each individual. Once again this month we will remember the story of the baby Jesus.

It is above all a story of love but this month I've been thinking about another story about love and human relationships that also began in that little town of Bethlehem many years before.

A man named Elimelech and his wife Naomi along with their two sons left Bethlehem, because of a shortage of food, and went to live in the country of Moab (in modern days known as Jordan) in ancient Palestine, located East of the Dead sea.

The family settled there but Naomi's husband died after three years and left her with two sons to care for. During the following years the sons integrated into the community and both in due course married Moab women.



Sadly Naomi's two sons also died leaving her without a husband or her sons. About this time Naomi heard that there was no further shortage of food back in the place she had come from many years ago and she decided to return there.

She told her daughters in law Orpah and Ruth to go back to their own parents, remain in Moab and marry again, men from the land of their birth.

Many tears were shed by all three women but in due course Orpah decided to remain but Ruth held on tightly to Naomi and all who know this story will recall Ruth's words of commitment to her mother in law.

"Don't beg me to leave you. Where you go I will go. Where you live I will live and your people will be my people."

So the two widows, Naomi and her daughter in law Ruth, the Moabite, returned to Bethlehem and they arrived at the start of the barley harvest. Remember how I told you this is a real love story. So there is more to tell and, as with every good story, a little twist to look out for.

Ruth worked in the barley fields belonging to a man called Boaz who knew all about the sacrifice she had made to leave her own country and take care of Naomi. He felt she was the kind of person he wanted to be his wife even though he knew she was a Moab.

But in that day and culture if a man died leaving a widow without a son to be his heir who could provide for his mother, the man's nearest relative



(who in many cases would be the deceased man's brother) would marry the widow.

There was such a man but he stepped aside and Boaz was able to marry Ruth and take care of Naomi. Ruth's determination to follow Naomi had brought her happiness so she and Boaz had a long and happy marriage.

Many years later Mary and Joseph also went to Bethlehem and what happened there changed the world forever.

Yes, there is a time for everything and this is surely the time for peace and love to all. Happy Christmas and goodwill to all people in 2024.

LEWIS NORTHEN
FUNERAL DIRECTORS

IN

MY FAMILY TAKING
CARE OF YOURS

📞 Get In Touch
1 Lincoln Way, Beverley, HU17 8RH
✉ info@lewisnortnenfuneraldirectors.co.uk
🌐 www.lewisnortnenfuneraldirectors.co.uk
☎ 01482 888 658

Born and raised in **Beverley**, we are proud of the funeral services we offer to our local community.

As a family business we want you to have confidence in us to support you from the first point of contact, throughout and thereafter. The moment your loved one comes into our care they will be treated with care and respect. We offer a comprehensive range of funeral services ensuring you receive the perfect funeral service for your loved ones.

We are available 24 hours a day, 365 days a year, we will guide and support your family throughout.

My family taking care of yours

Giving the personal touch to funeral services in Beverley and surrounding areas.

Funeral plans, memorial jewellery, available 24/7 365 days a year.



THE FESTIVE COUNTDOWN TO CHRISTMAS

In the festive countdown to Christmas, entertainment reaches a crescendo, culminating in the eagerly anticipated parties or family get-togethers.

At The Ferguson Fawsitt in Walkington, it's time for holiday cheer, with themed decorations and spirited team-members building the atmosphere, with festive family and work gatherings to compare Christmas jumpers, socks or hats, Secret Santa exchanges, laughter and surprises.

With a Christmas menu to delight and get you in the mood, decorations to brighten the party and the temptation to book to enjoy the New Year Quiz.

The Big New Year Quiz is a lively tradition, bringing people together for a night of fun and friendly competition.

From trivia about the year's highlights to pop culture references, the quiz adds a spark to New Year celebrations, creating memorable moments and laughter as friends and family test their knowledge.

Book your Christmas celebrations and pencil in your New Year Celebrations, all at the Ferguson Fawsitt.



COUNTRYSIDE MATTERS WITH SAM WALTON



As nothing much is happening at the moment, with all the unprecedented rain, I thought I would look through some of my slides from my multi-travelling experiences to cheer me up a bit.

As some of you are aware, I have had opportunity to travel to something like 40 different countries, so you can imagine I have seen some rather peculiar things being done, plus some excellent farming along the way.

Asia is a fascinating part of the world with good, bad and unbelievable ways of staying alive! The way they transport food and animals makes you almost question what you are seeing and if we did some of those things here, we would be banned from farming and probably locked up!

Because it is always warm in places like Thailand, Laos and Cambodia, the peasant farmers can get away with very cheap and shoddy buildings for pigs as an example and even their own living quarters are not exactly five star, so I suppose that sets them on whatever road they go on. Some of the things I have seen would make you hair curl, but I have never seen any mishaps, and that is not to say that there will not be any.



In the UK if anything untoward happened whilst travelling with food and livestock, it would be headlines on the news. Our headline news is to wish you all a Merry Christmas and you travel safely.



The Ferguson Fawsitt



OPENING HOURS

MON: 19:00 - 23:00

WED - SAT:
12:00 - 23:00

SUN: 12:00 - 22:30

What's on at the Fergie

1st Thursday of the Month - Bingo from 2pm

3rd & 4th Thursday of the Month - Live Music

1st Friday of the Month - Quiz Night from 8.45pm

2nd Friday of the Month - 8th December Food and Craft Fair



WEDNESDAY TO SATURDAY:
AFTERNOON TEA - 12PM to 5PM

www.fergusonfawsitt.co.uk

tel: 01482 526317

CHRISTMAS
— MENU —
2 Course £22.00
3 Course £28.95
FROM WED 6 DEC - SAT 23 DEC (exc Sundays)
Christmas Afternoon Teas available
Check website for more details

FOOD HOURS

WED - SAT:
12:00 - 19:30

SUN:
12:00 - 18:00

IN THE PICTURE WITH JOSH

Through the Winter months there is still a lot to photograph. I love getting out in the fresh air, especially on calm frosty mornings or snowy mornings if we're lucky enough to get any snow.

I like to spend Christmas Day and New Years Day out in nature, whether that's in the stunning landscapes of East Yorkshire, North Yorkshire or on the coast.



Even in extreme conditions, like the Beast from the East, I was wondering across the Westwood to take some shots in the storm but it's a bit nicer if there's some nice Winter sunshine!



The winter sunrises and sunsets create some beautiful light, silhouetting the barren trees against the vibrant orange skies and I love to photograph the ice, whether that's icicles near a waterfall or just the patterns in the ice.



Common birds like the Robin, Bullfinch or Goldfinch create some great colour against the otherwise dull undergrowth if you can capture them in the Winter sunlight.

If conditions are particularly cold, you may even get Redwings and Fieldfares venturing into your garden, or you might also get some rarer winter visitors from Europe.

Other wildlife like Roe Deer are also a bit easier to spot without as much foliage to hide behind.

There is also lots of opportunity to photograph the countless Christmas lights and firework displays through the festive season with lots of buildings lit



up through December it's a great time to get out and do some night photography and capture all the colourful lights.

You can find more information about my work and full portfolios on my website and my social media pages and if you have any questions don't hesitate to get in touch.

Instagram: [@joshharrison.photography](#)
 Facebook: [@JoshHarrisonPhotography](#)
 Web: [www.joshharrisonphotography.com](#)
 Email: [info@joshharrisonmedia.com](#)

IAN HARRISON - THE FESTIVE HANDYMAN

During the winter, handymen can find various jobs suited to the season.

Snow removal services such as clearing driveways and walkways, are in demand.

Winterising homes by insulating windows, sealing and fixing drafts, carrying out those essential tasks.

Indoor projects like painting, carpentry, or fixing plumbing issues become more prevalent as people spend more time indoors.

Now the lights are going up, perhaps you need help to hang lights or assembling decorations, or help with the practical jobs early in 2024.

Make sure your home is ready for the festive season and the New Year ahead.



Ian

HARRISON
HANDYMAN

For All Your Jobs Around The Home

- Painting, Interior & Exterior
- Tiling • Joinery
- Flat Pack Assembly
- Picture Hanging

And So Much More

07970 332373

ianharrison68@icloud.com • www.ian-harrison.com

CARD PAYMENTS TAKEN

Spread the cost of **A NEW KITCHEN OR BATHROOM**

WITH OUR FLEXIBLE FINANCE OPTIONS

MKM Building Supplies (Beverley) Limited is an appointed representative of Clearfc Ltd which is authorised and regulated by the Financial Conduct Authority (FRN: 938464). Clearfc is a credit broker not a lender. Credit is subjected to age and status. Minimum spend applies. Visit mkm.com/finance for more information.

Swinemoor Lane **Beverley**
01482 880088 HU17 0JZ

**FREE
DESIGN
SERVICE**

mkm.com

MKM

HOW TO STAY IN YOUR HOME FOR AS LONG AS POSSIBLE IF YOU NEED LONG-TERM CARE

You may assume that if you needed some form of long-term care, you would have to move into a care home or nursing home. But that may not be the case: receiving care in your own home can be enough to help solve the problems you're dealing with.

Many people also worry about having to move into residential care and therefore try to manage on their own for far longer than they need to. But they don't need to, as in-home care is a possibility.

After all, staying at home is many people's preferred option, because nothing beats the familiarity of your own home.

What in-home care support is there?

The most important decision to make when considering your care needs is whether you can stay in your own home or need to move into a care home. The decision will be based on what you want and what care you need, as well as how much it will cost.

Our needs change as we get older, and aspects of living independently can become more difficult. However, it is possible to organise in-home support that helps you stay in your home.

In-home care support includes:

- Making changes to your own home. This

could include installing a stairlift, having grab rails fitted around the house, installing a walk-in shower with a seat, or having a personal alarm fitted for emergencies, in case you were to fall.

- A caring professional coming to your home on a regular basis. Whether you need them for a few hours a week or several hours a day. They can provide help with cooking, cleaning, washing, dressing and lots of other things you may need support with.

- Live-in care. A carer can move into your home and be available 24 hours a day. This could be one person who lives there all the time or several people who work on a rota basis. The cost of this is, of course, likely to be much higher than visiting care. Both visiting care and live-in care can be provided either privately by individuals or by a home-care agency.

- Sheltered housing, which is accommodation especially designed for older people can allow you to continue living independently for longer. It usually involves a self-contained flat with a warden who will help to look after the place and an emergency alarm system should you need it. Some - but not all - also offer care services.

What are the financial advantages of in-home care?

There can be some financial advantages if you want to live in your own home for as long as possible. However, it's important not to let saving money by staying at home sway you when working out the best form of care for you.

One advantage is that the cost of in-home care can often be lower than care-home costs. Particularly if the support you need is limited. For example, the cost for around the clock care will be significantly different than if you need a few hours a day.

Another advantage is that if you remain living in your own home, the value of the property is disregarded in the financial assessment (means test). This is used by your local authority to work out how much you will have to pay towards the cost of your own care.

You do have to be mindful that costs are very different depending on whether you need support during the day or at night, on weekdays or at weekends.

And of course, you'll still have the cost of maintaining your house, but you do have the advantage of being in familiar surroundings.

Do I need a care-needs assessment?

In order to decide whether in-home care could work for you, it's important to have a care-needs assessment.

A financial assessment by your local authority will help to establish the best way to provide the help you need and will assess how much they'll pay towards any long-term care.



Feel confident and in control

Financial advice for the future you imagine.

We're here to help you feel in control of your money. Not the other way around.

Let's start a conversation.

Managing Partner Practice

**St
James's
Place**



Navigation Wealth Management is an Appointed Representative of and represents only St. James's Place Wealth Management plc (which is authorised and regulated by the Financial Conduct Authority) for the purpose of advising solely on the group's wealth management products and services, more details of which are set out on the group's website www.sjp.co.uk/products. The 'St. James's Place Partnership' and the titles 'Partner' and 'Partner Practice' are marketing terms used to describe St. James's Place representatives.

They will take into account your desire to remain in your own home for as long as possible, should that be the case.

Can a financial adviser help me?

The UK's care system is complicated and often difficult to navigate. Taking expert advice from a financial adviser can be of value and help you stay in control of the big decisions.

Plus, you're likely to be working out your care options at a time in your life when you're feeling highly stressed and emotional. This could lead to making poor decisions.

A financial adviser can help to give you a rational perspective on your situation. They can offer guidance on how to deal with various aspects of the care system and the best way to arrange your finances to meet your needs.

Get in touch

We can help you through the entire process, thanks to our long-standing expertise in advising people during later life. Contact us at our Beverley office on **01482 379504**.

Source

¹NHS Digital, 16 May 2023 - accessed August 2023.



CHAIRMAN'S CHRISTMAS MESSAGE 2023

Christmas is a very special time for us all. It is a time to reflect on the passing of another year and to look forward to the New Year that awaits us.

Christmas is about celebrating a message of hope for a brighter future. Irrespective of our individual circumstances, backgrounds, or beliefs; this is the season to care for one another and to embrace the spirit of togetherness, which unites us all.

This year has continued to be challenging for our residents affected by the cost-of-living crisis, when so many people, especially the most vulnerable in our society, need help, support and advice.

It is at times like these when we remember the importance of family, community, time spent together and the role of communal celebrations.

Of every faith or none, Christmas is a time to step back, take a breath and recharge with those closest to us, whilst appreciating that we are not all so lucky, and doing what we can to help.

It is said that Christmas is a time of peace and our thoughts are with those in conflict across the world that a peaceful solution can be found.

Across the East Riding, we have many wonderful people who give their time and effort to bring cheer to those for whom life is particularly difficult or lonely - and not just at Christmas.

Without the fantastic network of our voluntary organisations, life would be so much poorer, and they all deserve our support for their work in the community.

Whilst we celebrate with friends and family, let us also remember with gratitude the dedicated staff in the public and emergency services, hospitals and care homes who will be working throughout the festivities and also to those serving in our armed forces.

As family and friends come together and look forward to the New Year, we should find ways of strengthening our own communities for whatever may lie ahead and build on the foundations of success we've already achieved.

I would like to wish you a future that will be happy, successful and above all peaceful. I would also like to send a special thank you to all those people who have to work over the Christmas and New Year holidays.

Councillor John Whittle, Chairman of East Riding of Yorkshire Council.



**Four Generations,
Giving Over 130 Years Service**

Herbert 1870-1962	Eardley 1908-1986	Geoffrey 1939-2015	David 1964
----------------------	----------------------	-----------------------	---------------

H. KEMP & SON LTD.
FUNERAL DIRECTORS
(ESTABLISHED 1893)

- Funerals Respectfully Conducted
- 24 Hour Out of Hours Service
- Free Advice & Support
- Private Restrooms
- Prepaid Funeral Plans Available
- Finance Options Available

Tel: 01482 844695

www.hkempandsonltd.com

259 Hallgate, Cottingham, East Yorkshire, HU16 4BG
Fax: 01482 843898
Email: hkempandsonltd@gmail.com

SANDRA STAPLES (B.E.M), EXEMPLIFIES THE TERM VOLUNTEER - ENCOURAGES YOU TO GET INVOLVED

Mrs Sandra Staples, (B.E.M) for services to SSAFA, East Yorkshire Branch Secretary of SSAFA, the Armed Forces Charity, has continued with her voluntary work with SSAFA for over 34 years.

In 2019 she was awarded a 30 year certificate at a special lunch put on in her honour.

Chair of the East Yorkshire Branch, Michael H. Menzies-Baird, said "Sandra Staples is an amazing person with an incredible work ethic. SSAFA are very lucky to have such a wonderful individual onboard"

Sandra sets high standards and is on the look out for others to join her in her work to help those in need within the Armed Forces Community (Navy, Royal Marines, RAF, Army, Reserves and their families) whether serving or veterans, on a daily basis.

Following her continued work with SSAFA, Sandra received a letter from the Cabinet Office in the November on behalf of HM Queen Elizabeth II asking if she would accept the B.E.M., but Sandra wasn't allowed to tell anyone until the 2021 New Year's Honours List came out. Sandra mentioned, "Receiving the British Empire Medal is one of my proudest moments, I had to keep it quiet for a while, which was really difficult."

We put 12 questions to Sandra, B.E.M. about her time with SSAFA and how people can get involved.

1. Why in 1989 did you decide to get involved with SSAFA?

My husband was in the RAF, stationed in Belgium. There was a SSAFA fundraising committee to raise funds to allow children with additional needs to go on holiday. I decided to join the in service committee and that's where it all started

2. Who influenced you most at the start with SSAFA?

Other wives were very supportive, they encouraged me to get involved. From the start I found it to be a great organisation to be involved with. All the ladies got together to offer support wherever it was required.

3. What role did you take up, was this a role that you had previously held elsewhere?



No real role, I was just part of the committee, you stepped in to help where you could. Different fundraising events you were tasked to help in a variety of ways in the best way you could.

4. Did you envisage being with SSAFA for such a long time?

No, not really. I enjoyed being part of SSAFA, and when we came to Beverley I looked up what SSAFA were involved in locally.

A gentleman called Reg Jones, Beverley Division of SSAFA, came to see me, we had a chat, and with my background he suggested I looked at being a caseworker.

I had a meeting with Sue Whittaker (MBE), Branch Secretary for East Yorkshire, and following a meeting at the old Army Museum, (where Flemingate is now), I was taken on to help out. SSAFA ensured I was given all the appropriate training, and I went on to do what I enjoy doing which is helping people.

As people retired I was fortunate enough to get more involved, stepping into bigger shoes as they say. I have not looked back, being involved with SSAFA has given me such an immense amount of pride and pleasure over the years.

5. What inspires you to keep going?

Because my husband is a veteran, I understand what people have gone through, so the satisfaction of being able to help, to see the changes in people, it keeps me and the team at SSAFA going.

6. What do you like most about the Charity?

SSAFA, has a very simple philosophy, that is to help those who have served, to assist them when it is needed, whatever they require.

7. What gives you the most satisfaction in the role?

That's easy, Seeing the difference that SSAFA makes to peoples lives.

8. How has SSAFA changed over the years?

SSAFA have had to change with the



times, they keep up to speed with technology, that has its pro's and con's.

Training courses have changed, and SSAFA keep on top of everything to ensure all the systems are maintained and the best of care and help is given. People liaise with people, support is key to the success of the charity.

9. What positive impact does SSAFA have?

It varies, positive impact can be as simple as giving support, to help with wellbeing, combat loneliness, help in financial situations, give guidance, liaise with groups not only in the UK but around the globe. To help with connections, networking to deliver the best of help for each individual case.

10. With events throughout the year, which do you look forward to the most?

I always look forward to Armed Forces Day. In the past we have had the flower festival, which was amazing, but 2024 will be special.

11. How can people help? Do you need to be involved with the forces to help SSAFA?

Yes we need help. People think you need to have been in the services to help at SSAFA, but that is far from the truth, we have many varied positions.

SSAFA always ensure the appropriate training is given, to ensure both the safety of the Volunteer and also the people SSAFA are assisting.

Visitors help to prevent loneliness, or alternatively caseworkers to bring in statutory services when required, the scope is amazing and very rewarding seeing the results.

The smiles you put on peoples faces is very rewarding, and SSAFA changes peoples lives. The hours people offer are as little or as much as suits them. The skill is to be able to connect with people.

12. What can we look forward to in 2024?

SSAFA locally will have Beverley Armed Forces Day, which will be an extra special day with it being the 80th Anniversary of the D Day landings.

You will have to wait and see what we are planning.

REMEMBRANCE SUNDAY IN BEVERLEY



SSAFA NEED YOU - CAN YOU HELP?

SSAFA, the Armed Forces charity, extends invaluable support during Christmas and throughout the year, embodying the spirit of compassion and service.

During the festive season, SSAFA ensures that military families facing challenges receive practical assistance, emotional support, and a sense of community. From financial aid to emotional counseling, SSAFA addresses the unique needs of service members, veterans, and their families, recognising the strains imposed by military life.

Beyond the holidays, SSAFA's commitment endures, offering a lifeline to those navigating the complexities of military service. Their year-round initiatives include housing support, mental health services, and assistance for veterans transitioning to civilian life. SSAFA's dedication to the well-being of military personnel underscores the importance of a support network that extends far beyond the Christmas season, demonstrating that solidarity and care are constants in the lives of those who have served their country. SSAFA, the Armed Forces charity, is a longstanding organisation dedicated to providing support for the well-being of serving personnel, veterans, and their families.

Initiatives include:

- Financial Assistance
- Housing Support
- Health and Well-being
- Practical Support
- Veterans' Support

These initiatives reflect SSAFA's commitment to addressing the diverse and evolving needs of the military community throughout the year. SSAFA relies on a network of volunteers and professionals who work together to provide timely and tailored support to those who have served or are currently serving in the armed forces.

Contact SSAFA on: **01964 552 837**
 Email: eyorks.branch@ssafa.org.uk
 Website: ssafa.org.uk

ssafa | the
Armed Forces
 charity

Your Veterans Need You!

SSAFA are currently looking for volunteers to fill the following positions:

- Administration Assistant
- Branch Fundraiser or Coordinator
- Branch Volunteering Coordinator
 - Caseworkers
- Divisional Secretarial Support
 - Mentors
- Recruitment Coordinators
 - Treasurer Support



If you think you can help, please get in touch:

Tel: 01964 552 837

Email: eyorks.branch@ssafa.org.uk

Website: ssafa.org.uk

LOCAL BUSINESS OWNER GROWS AWARD-WINNING HOME CARE BUSINESS

Local business owner Mandy Aitken has expanded her award-winning care, having enjoyed four successful years of providing exceptional home care to older people in Beverley and Hull, now covering neighbouring areas, including Market Weighton, Pocklington, Brough, Gilberdyke and the surrounding areas.

Mandy set up Home Instead Beverley and Hull back in 2019 with the mission to expand the care options available to older people in the area. Building a strong team of care professionals, Mandy has made it possible for people to stay living at home if the time comes when they need support.

Care professionals deliver a range of support, including personal care, such as help with dressing and bathing, companionship, dementia care, and live-in care.

For three years running, Home Instead Beverley and Hull has been included in homecare.co.uk's top 20 home care companies in Yorkshire & The Humber; a list based on reviews by clients and their families, on a website dubbed 'the TripAdvisor for home care'.



Mandy decided it was time to take Home Instead's care services next door, mirror the success she has seen in Beverley and Hull, and give more people of the East Riding access to the same exceptional home care.



Commenting on her expanding business, Mandy says: "Over the past four years it has been an honour to be part of the community and support older people in the area. It's so heartwarming seeing older people retain their independence and stay living in their beloved homes - a place of warmth and familiarity - while getting the support they need. I'm so grateful to my team for giving families the reassurance that their loved one is in safe hands. It's an exciting future ahead, offering the same to the people of Pocklington and Brough, and the surrounding local areas, giving them an alternative to residential care."

"Our care is tailored to the person, and we match care professionals to clients based on similar interests. It's no surprise that we've seen friendships blossom. I'm certain we'll see this happen at Home Instead Pocklington and Brough."

Home Instead is looking to initially recruit 10 new care professionals, whether they have previous sector experience or not.



Full training and ongoing support is provided, standing new recruits in great stead to deliver exceptional care.

To find out more about Home Instead Beverley and Hull's home care services and career opportunities, call **01482 231145** or visit www.homeinstead.co.uk/beverley-hull



Home Instead
To us, it's personal

Live well,
your way

Start your home care journey with Home Instead® today

- ♥ Home Help
- ♥ Personal Care
- ♥ Companionship
- ♥ Dementia Care



Join our team



01482 231145

www.homeinstead.co.uk/beverley-hull

Est.
1866**BEVERLEY**
BUILDING SOCIETY

Building Better Futures

Est.
1866**BEVERLEY**
BUILDING SOCIETY

Building Better Futures

Make your money work harder with our

90 Day Notice Account

5.50% Gross* / AER** Variable

Telephone: 01482 881510

Email: customerservices@beverleybs.co.uk

Summary Box - Key Product Information

Account name	90 Day Notice		
What is the interest rate?	Annual Interest		Monthly Interest
	For Balances £5,000+	5.50% Gross* / AER**	For Balances £5,000+ 5.45% Gross* / AER**
	Annual Interest - Added at 31 December each year at close of business.		Monthly Interest - Added on last day of each month at close of business and immediately paid out to a different account of your choice.
	Balances under £5,000 will attract the lowest rate from the Instant Access Account.		
Can Beverley Building Society change the interest rate?	Yes, the interest rate for this account is variable. Refer to our General Savings Terms and Conditions for full details		
What would the estimated balance be after 12 months based on a £5,000 deposit?	Deposit	Annual Interest (Assuming interest paid back into the account)	Monthly Interest (Paid to nominated account other than the 90 Day Notice Account)
	£5,000.00	£5,275.00	£5,000.00 (Total monthly interest paid in 12 instalments over 12 months would be £272.50)
	These amounts assume no other transactions or rate changes.		
How do I open and manage my account?	<p>This account can be opened if: You are resident and tax resident in the UK. You pay in at least £5,000.</p> <p>How to open the account Fill out and sign the application form which can be obtained in branch, on our website or by calling us. Provide identification (examples in our "Verifying your Identity" list). Send us at least £5,000 by bank transfer or cheque payable to yourself.</p> <p>How to close the account 90 calendar day notice required (except in the event of death being registered with the Society for any party to the account).</p> <p>Managing your account This account can be managed in branch or by post. Please contact us if you need assistance from us or someone else.</p>		
Can I withdraw money?	<p>YES, by giving us 90 calendar days notice.</p> <p>No immediate withdrawals.</p> <p>Notice: Only one notice period at a time. After 90 days you have 7 further calendar days in which to take out the money. If your request or the 90th day falls on a non-business day, the next business day will be used.</p> <p>Refer to our General Savings Terms and Conditions for more information on taking money out.</p>		
Additional Information	<p>* Gross rate - the contractual rate of interest to be paid on a savings account without any deduction being made in respect of potential tax liability.</p> <p>** AER - stands for Annual Equivalent Rate and illustrates what the interest rate would be if interest was paid and compounded once each year.</p> <p>Income Tax - Tax treatment depends on the individual circumstances of each customer and may be subject to change in the future by HM Revenue & Customs.</p>		

www.beverleybs.co.uk

The Society reserves the right to vary, improve or withdraw any of the benefits or services outlined within this document. The Society is a member of the Building Societies Association. Authorised by the Prudential Regulation Authority and regulated by the Financial Conduct Authority and the Prudential Regulation Authority. Registered Number 206064.

Protected



BEVERLEY AT CHRISTMAS

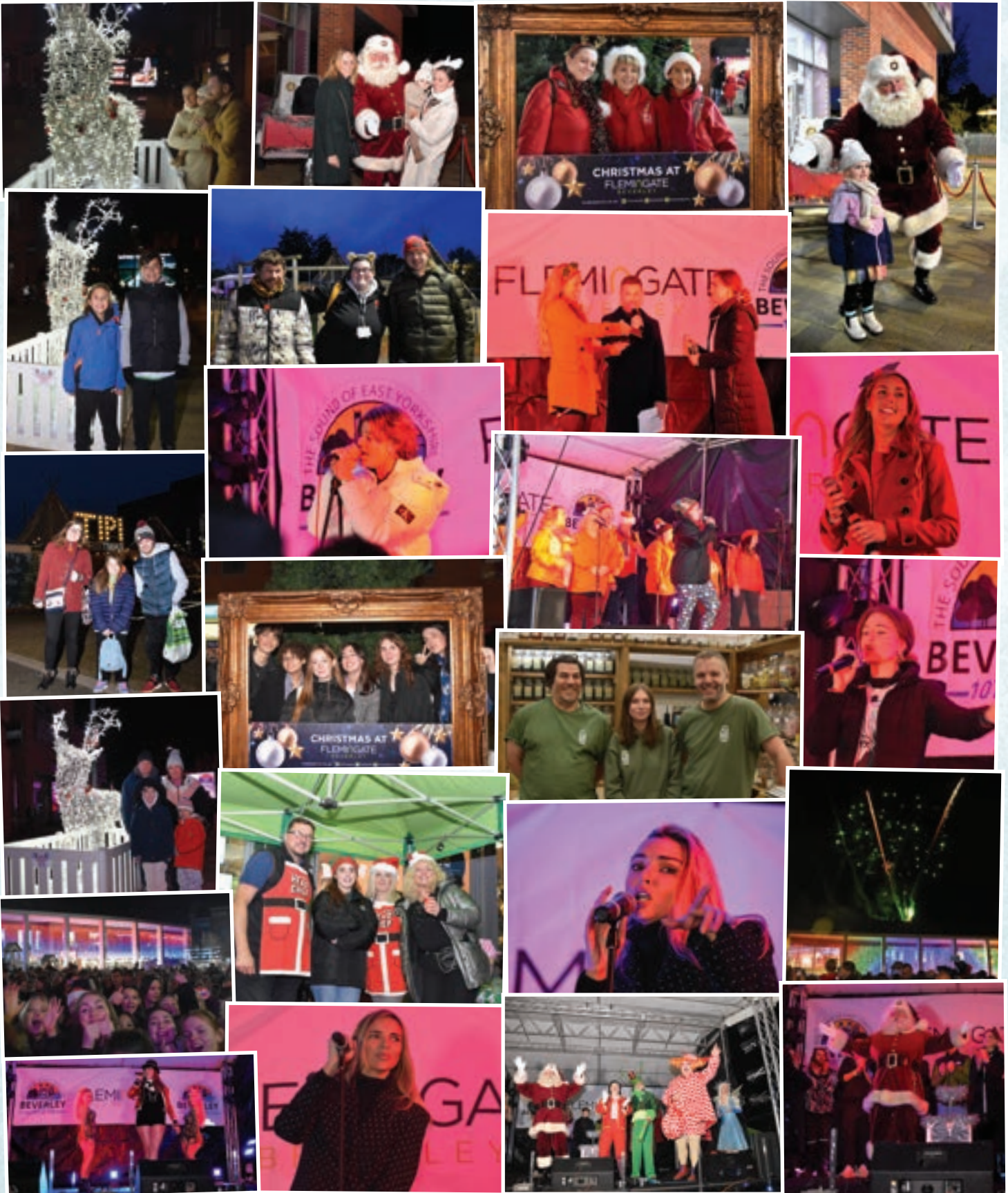


HERE TO GET *you* THERE

HUNTERS[®]
EXCLUSIVE

BEVERLEY / 01482 861411

FLEMINGATE CHRISTMAS LIGHTS SWITCH ON



SALES / LETTINGS / MANAGEMENT

HUNTERS®

BEVERLEY / 01482 861411

HERE TO GET *you* THERE

LIVING LIFE THROUGH YOUR SENSES

I hope that by the time you sit down to read this month's Christmas edition of Just Beverley, you've got most of the shopping and arrangements in order and you can snuggle down with a favorite tippie and a mince pie... or two.



We experience life through our senses and there are many sights, sounds, sensations, scents and tastes that particularly evoke the Christmas season. The nativity scene, the sight of garlands and wreaths hung up in your neighborhood, the smell of pine from the Christmas tree or cinnamon and orange from a candle or woodsmoke from the fire remind us that it's the festive season once again.

In the Buddhist tradition there are six senses: sight, hearing, smell, touch, taste and the added sense of "mind" or the activity of thinking. As a mindfulness teacher and hypnotherapist, I help people manage their mind or thinking processes as these can lead us into dangerous territory and whilst the words peace and joy are associated with Christmas, it can also be a time of stress, worry and conflict.

Learning some simple techniques to help us manage thoughts and recognise when we're becoming stressed or anxious can improve our day-to-day experience of life immensely.

We can use our five senses to do this when we notice we are becoming overwhelmed by using the "five things" technique which also works well for children to help them manage their feelings.

So, firstly bring your attention to:

5 things you can SEE around you: a saucepan; a door; a hand; the ceiling; a spoon. (You can tap your thumb and index finger together as you acknowledge each item... without judgement or adding any story to the item ... just noticing what you see).

4 things you can TOUCH: your hair; the table; the ground under your feet; the seat you're sitting on.

3 things you can HEAR: traffic in the distance; the sound of your own breathing; the wind outside.

2 things you can SMELL: perfume or aftershave; scents of nature.

1 thing you can TASTE: the last coffee you had or a sandwich from lunch.

If you think you haven't got the time to do this, whether you're stuck in traffic or trying to figure out the timings for Christmas dinner this only takes a minute to do so just take a step back, breathe and use your senses to ground you and bring you back to the present moment. Think of this as the equivalent of the "switch it off, switch it back on again" technique used for your computer - you know it works!

This Christmas, embrace your imperfections, be grateful for everything you have as it's the people around the Christmas tree, not the presents under it that matter. Savour the tastes, sounds and laughter and imprint them on your memory and be present in each moment. Global peace around the world begins with peace within each one of us.

May I wish you a happy, healthy and peaceful Christmas and New Year. In the meantime, give yourself the gift of "the present". Every week on a Monday evening, I run a free mindfulness session. These sessions present a wonderful opportunity to take time out for yourself. If you'd like to join, just drop me a message or give me a call on the details below.

For more information and details on further techniques including hypnotherapy, visit www.francesdunning.com or contact me, Fran Dunning on 07973 819867.

Est.
1866

BEVERLEY

BUILDING SOCIETY

Building Better Futures

Help your children build better financial futures with...

Our best ever rate!

Junior Cash ISA!

5.50% Gross* / AER** Variable
£9,000 deposit for tax year 2023/2024

Eligible for customer living in a DN, HU, or YO Postcodes

Telephone: 01482 881510

Email: customerservices@beverleybs.co.uk

Summary Box - Key Product Information

Account name	Junior Cash ISA
What is the interest rate?	5.50% Gross* / AER** Interest is calculated daily and added annually on 5th April at close of business.
Can Beverley Building Society change the interest rate?	Yes , the interest rate for this account is variable. Refer to our Junior Cash ISA and General Savings Terms and Conditions for full details
What would the estimated balance be after 12 months based on a £1,000 deposit?	£1,055.00 This figure is for illustration purposes only and assumes no further deposits, transfers in, withdrawals or interest rate changes.
How do I open and manage my account?	Available to UK Residents and UK Tax Residents aged under 18, who do not hold a Child Trust Fund or another JISA of this type for this young person in the same Tax Year as this Cash JISA is subscribed to. Complete the application form, relevant declaration(s) and provide necessary identification then forward together with the initial deposit, payable to the young person (account holder), to the Society's office. The minimum opening deposit is £1. Contact us to transfer the full balance to/from another provider. The maximum deposit per Tax Year is set annually by HM Revenue and Customs. For the Tax Year 2023/24, the maximum deposit is £9,000. This account can be operated by a young person over the age of 16 or by the registered contact with parental responsibility, and can be managed via post and branch. The Society will be in contact regarding the options at maturity of the account, as the JISA will not continue past the young person's 18th birthday.
Can I withdraw money?	Withdrawals are not permitted from this account.
Additional information	* Gross rate - the contractual rate of interest to be paid on a savings account without any deduction being made in respect of potential tax liability. ** AER - stands for Annual Equivalent Rate and illustrates what the interest rate would be if interest was paid and compounded once each year.

Est.
1866

BEVERLEY

BUILDING SOCIETY

Building Better Futures

www.beverleybs.co.uk



The Society reserves the right to vary, improve or withdraw any of the benefits or services outlined within this document. The Society is a member of the Building Societies Association. Authorised by the Prudential Regulation Authority and regulated by the Financial Conduct Authority and the Prudential Regulation Authority. Registered Number 206064.



Protected

www.justbeverley.co.uk



BEVERLEY 23

LOOK NATURAL, A CQC REGULATED AESTHETIC CLINIC PROMOTING ADVANCED SKINCARE

Feeling good about how you look can significantly improve your wellbeing, but if you do decide to try aesthetic treatments, always look for a reputable, insured and suitably qualified professional who takes time to explain things fully and doesn't pressure you.

As well as treating the signs of ageing, at Look Natural Aesthetics we want to encourage our patients to have healthy skin and to prevent future ageing, so we are now offering advanced skin treatments and skin care regimes.

Now is the perfect time to build good skin for the future - think of it as an investment. These treatments also are ideal if you want your skin to have that beautiful glowing 'party season' look.

Micro-needling:

Micro-needling offers unparalleled collagen induction by harnessing the body's innate ability to regrow and repair skin as a response to micro damage. A pen like device uses hair thin surgical needles to create controlled invisible micro-injuries on the skin's surface, promoting a collagen healing process, leading to improved skin appearance.

Unlike regular facials, which treat just the top layer of dead skin, micro needling treats your skin deeper down where it really matters.

The benefits of micro-needling are numerous:

- reduce the appearance of fine lines and wrinkles
- improve acne scars,
- improve skin texture, tone, and elasticity,
- reduce hyperpigmentation
- treat sun damage,
- treat enlarged pores.
- enhances the absorption of skincare products, allowing them to penetrate deeper into the skin for optimal results
- hair restoration



At LNA we can further bespoke our treatments for individual skin concerns, with the use of 'meso cocktails.' The micro needling procedure allows the delivery of this highly effective cocktail of micro nutrients, such as hyaluronic acid, pentapeptide, coenzyme Q10 and other amino acids directly into the deeper skin layers where it matters.

These substances promote the formation of new skin cells and help to improve skin texture, firmness, and elasticity, resulting in a smoother and more youthful appearance, and again reduce the appearance of fine lines, wrinkles, and acne scars.

Skin Peels:

Autumn and Winter are known as 'peel season!' It is a great time to reset your skin barrier, as we go from warm to cold outside. AKA chemical peels, skin peels have been around since the time of Cleopatra. The newer next generation skin peels we offer are absolutely not scary and have minimal down time. They involve applying a very gentle solution of plant and fruit acids to the skin to deeply exfoliate and remove damaged outer layers, stimulating growth of new skin cells, resulting in a smoother, brighter, and more even complexion.

Again this treatment is ideal for:

- enlarged pores
- acne/spots
- dry skin
- sun damage
- wrinkles and lines
- scarring from chicken pox.

Because peels remove the superficial dead layer of skin we would always recommend new clients to have a gentle peel before starting a course of micro needling.

Advanced skin care at a clinic however without a regular routine is a bit like going to a gym and then going for a "take away". We would always suggest using a range of medical grade daily cleansers such as pHFormula to complement your treatments.

Cosmetic over the counter skin care tends to be expensively fragranced products that have limited benefit for the skin. Pharmaceutical grade skin care however is



scientifically formulated with higher grade and more concentrated active ingredients. Advanced formulations have been clinically researched which are easier for the skin to absorb and work with and improve the efficacy of aesthetic treatments. Products such as pHFormula are also bespoke to your individual requirements such as acne, redness or ageing.



Benefits of choosing our CQC Regulated Clinic:

When it comes to cosmetic treatments, it is crucial to choose a reputable and regulated clinic. At our CQC regulated clinic, patient safety and satisfaction are our top priorities. The Care Quality Commission (CQC) is an independent regulator that ensures healthcare providers meet essential standards of quality and safety. By choosing our clinic, you can have peace of mind knowing that our treatments are performed by qualified professionals in a safe and hygienic environment.

Look Natural Aesthetics, 179 Hull Road, Woodmansey, HU17 0TR.
www.looknaturalaesthetics.co.uk



LOOK NATURAL
- Aesthetics -

www.justbeverley.co.uk

THE GREAT DEBATE - CHRISTMAS PUDDING OR MINCE PIES AFTER CHRISTMAS DINNER?



The choice between Christmas pudding and mince pies after Christmas dinner often comes down to personal preference. Some prefer the rich, fruity goodness of Christmas pudding with its traditional flaming presentation, while others opt for the bite-sized sweetness of mince pies.

It's a delightful debate, and in the end, having both on the table might be the perfect solution to satisfy various tastes during the festive season.

The post-Christmas dinner dilemma of choosing between Christmas pudding and mince pies has sparked a delightful debate among festive enthusiasts. These two iconic British desserts, each laden with tradition and flavor, stand as symbols of the holiday season. The decision, often a matter of personal preference, adds an extra layer of excitement to the culinary festivities.

On one side of the debate stands the Christmas pudding, a venerable dish with medieval origins that have evolved over centuries. Rich in history and symbolism, the Christmas pudding is a culmination of diverse ingredients such as dried fruits, suet, spices, and often soaked in alcohol. Its preparation, traditionally carried out on Stir-Up Sunday, involves a communal gathering where family members take turns stirring the mixture, making wishes, and setting the stage for the flavors to meld over time.

The very act of serving Christmas pudding is a spectacle itself. The pudding is often ignited with a burst of flames from a generous dose of brandy or rum, creating a visually stunning and theatrical presentation. Its association with superstitions, like hiding coins for good luck, adds an element of surprise and tradition to the dessert.

On the opposing side is the charming mince pie, a bite-sized treat with its own historical roots dating back to medieval times. Originally known as "shred pies," mince pies have transformed over the centuries from savory concoctions featuring minced meat, suet, fruits, and spices to the sweet and fruity delights we know today. The modern mince pie typically contains a mixture of minced fruits, sugar, and spices encased in a buttery pastry shell.

The debate often centers around the practicality and ease of consumption. Mince pies, being individually portioned, offer a convenient and tidy way to enjoy a sweet post-dinner indulgence.

Their bite-sized nature allows for easy sharing and sampling without the commitment to a larger slice. The aroma of spices like cinnamon and nutmeg, combined with the buttery pastry, creates an enticing experience that is hard to resist.

In the end, the choice between Christmas pudding and mince pies becomes a matter of taste, tradition, and personal inclination. Some may argue for the theatrical grandeur of the flaming Christmas pudding, while others advocate for the delightful simplicity and versatility of mince pies. Perhaps, the perfect solution lies in embracing both, allowing the table to showcase the diversity of flavors and traditions that make the Christmas season truly special. After all, the spirit of the holiday is about bringing people together, and what better way to do so than through a delicious debate over dessert.

Merry Christmas from Shane and all the staff at Stuart's, Lincoln Way.



Jadan

Print that gets you noticed

BROCHURES LEAFLETS
POSTERS CALENDARS PADS
LARGE FORMAT PRINTING
STATIONERY MAGAZINES
SAFETY SIGNAGE BANNERS
VARIABLE DATA/MAILING
and much much more

2024 CALENDARS NOW AVAILABLE



Calendars are one of the most effective ways of advertising and a fantastic way of placing your brand or cause in front of the customer for a whole year.

From Desktop Calendars to Wall Calendars and Wallplanners, we can design and print in a range of formats and sizes to suit your brand.

01482 610902

sales@jadan-press.co.uk

www.jadan-press.co.uk

Rainbow House, Kimberley Street, Hull, HU3 1HH

JadanPress JadanPress jadan_press

PROMOTA

PROMOTA

BPIF

UKS

bpma

UKS

THE KEY TO MOBILITY AT FOX MOBILITY

Christmas mobility gifts empower individuals with enhanced independence, mobility, and an improved quality of life. Wheelchairs, mobility scooters, and adaptive aids become thoughtful presents that break down physical barriers and contribute to the recipient's overall well-being.

These gifts offer the freedom to navigate the world with increased ease, fostering a sense of autonomy that may have been limited before. The impact extends beyond the immediate recipient, positively influencing their family and community dynamics.

Christmas mobility gifts promote inclusivity, individuals gain the confidence to participate more fully in social activities, creating stronger connections with loved ones. These gifts also contribute to mental health, alleviating feelings of isolation and fostering a sense of belonging.

Mobility gifts embody the spirit of compassion, empathy, and the true essence of the festive season, spreading joy and understanding.

Christmas mobility gifts become invaluable tokens of empowerment, the positive impact that kindness and inclusivity can have on the lives of those facing mobility challenges.

110 -112 Walkergate, Beverley, East Yorkshire, HU17 9BT.
Tel: 01482 887799.
Email: info@fox-mobility.co.uk
Website: www.fox-mobility.co.uk

MR CARPETS

CARPET AND FLOORING SPECIALISTS

↓ TAKE A LOOK AT OUR QUALITY INSTALLATIONS ↓




36 YEAR ANNIVERSARY

36 years in business

36 years of good, honest service

We wish everyone a Merry Christmas and a Happy New Year

Check out our Facebook and Google reviews

01482 872134  [mrcarpetsbeverley](https://www.facebook.com/mrcarpetsbeverley)

E: mrcarpets@hotmail.co.uk
 3 Becks North, Beverley, HU17 OPR



Tel: 01482 887799
Email: info@fox-mobility.co.uk

Fox Mobility
110-112 Walkergate
Beverley
East Yorkshire
HU17 9BT

- **Stairlifts**
- **Riser Recliner Chairs**
- **Walking Aids**
- **Power Chairs**
- **Scooters and Accessories**
- **Servicing and Repairs for your Mobility Equipment**

Need advice about mobility equipment? We're here to help!



Telephone: 01482 869111
sales@rosesofbeverley.karoo.co.uk



The Kitchen Factory, The Courtyard,
Tokenspire Business Park, Beverley
HU17 0TB

Monday to Friday 9am - 5pm | Saturday 9am - 1pm

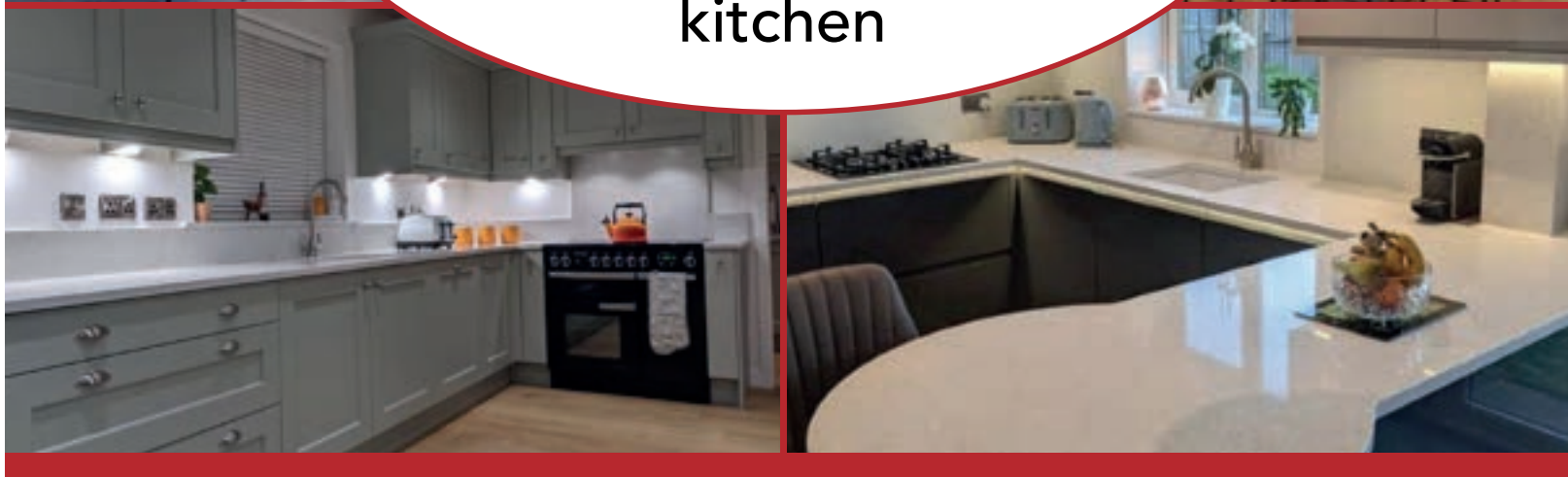
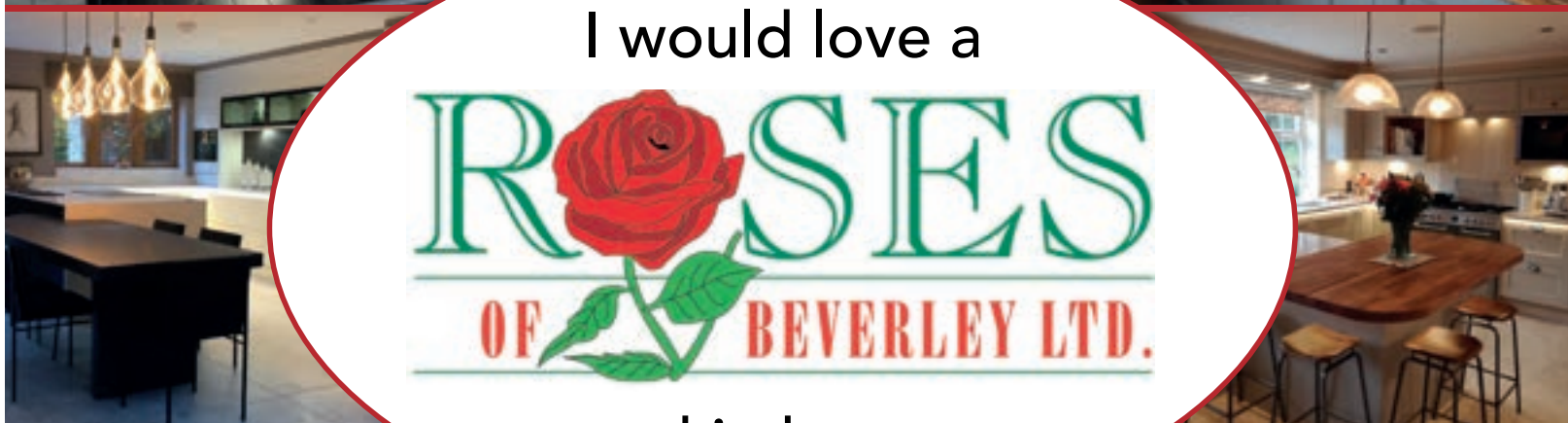
Roses Kitchens grown in Beverley for over 20 years



I would love a



kitchen



Please call 01482 869111 to book a viewing

MANY MORE OF OUR CUSTOMERS KITCHENS ON OUR WEBSITE

5 STAR RATED OVER 69 GOOGLE REVIEWS ★★★★★

Visit www.roseskitchens.com

to see our customers kitchens and read what they have to say about us

Telephone: 01482 869111



COLOUR ME IN!



Pinocchio is starring at Parkway Cinema this festive season. Help colour in his adventure as he escapes the clutches of the evil ringmaster, Spagboli, with the help of his best friend Jiminy Cricket, the blue fairy and his mum - the hilarious pantomime dame.

DOT TO DOT



What do you think the picture will be? Connect the numbers to discover who might just be dropping off your presents this Christmas! Then once you've joined the dots, you can colour it in!



Can you help the presents find their way through the maze to the Christmas tree?



CHRISTMAS MAZE



THOUGHT FOR THE FESTIVE SEASON

December is not the last month of the year, but an introduction to the year ahead.



IT'S THE MOST WONDERFUL TIME OF THE YEAR

December brings magical times. Lights, snow, cosy fires, jumpers, gloves, smiles and togetherness. Time to make wishes come alive. Christmas - it's all about the heart.

Make your Christmas tree a symbol of love, all lit up the world feels a happier place.

Do you have any amusing stories, quotes or pictures? Send them to info@justbeverley.co.uk

WORDSEARCH

N C W Z P F G D M H I T O S T
 U E V Q Q J E T O U H C U C Q
 A U M W I C D L J E E H V S G
 Z F D W E G I F J U P R B S T
 J F A M O D O S B P M I Y Z X
 Y W B M A N V T O O G S P B X
 W E R Y I N S F V W Z T E T B
 R T S W S L E I J N P M H O R
 N B R A T C Y G X H P A T E N
 L I G H T S W T I U I S T E F
 G A H A Z S H D L L W H Q V G
 P S A C M F Y G H M G Q S Y Z
 N T P A T N A S T U G N Y J H
 B I P Q X H Q X A L X S X R Z
 T U Y V V L F L D V L O P K G

CHRISTMAS
 DECEMBER
 SANTA
 SNOWMEN
 GIFTS

LAUGHTER
 LIGHTS
 FAMILY
 HAPPY
 HOLIDAYS



Dark Nights
 Enjoyment
 Christmas Celebrations
 Excitement
 Mince pies
 Beautiful Times Together
 Entertaining
 Reindeer

WHERE IN BEVERLEY?

Where in Beverley can you find these festive lights?
 Answer on Page 38.



THREE FOR CHRISTMAS QUIZ

What address do you use
 to send a letter to Santa?

What band had the hit single
 'Last Christmas'?

True or False: Denmark sends a
 Christmas tree to London every year

Answers on Page 38.

DREAM DOORS®
 NEW LIFE FOR OLD KITCHENS

UP TO 50% LESS THAN A NEW FITTED KITCHEN

by simply replacing the doors and worktops



- MODERN
- CLASSIC
- TRADITIONAL
- CONTEMPORARY

- ▶ Up to 50% less than a new fully fitted kitchen
- ▶ Replacement kitchen doors
- ▶ Cost effective made to measure solution
- ▶ Worktops and appliances
- ▶ Quick installation in 2-3 days by local professionals

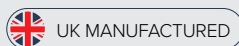
Checkatrade.com **9.8/10**
Where reputation matters

4a Belprin Park,
 Swinemoor Lane,
 Beverley, HU17 0LN

*Wishing all our
 customers a very
 Merry Christmas
 and a Happy New Year*

Call us now for a free estimate:
01482 861 653

dreamdoors.co.uk



THE UK'S #1 KITCHEN MAKEOVER COMPANY

HOLIDAYS DURING THE FESTIVE SEASON

The ideal Christmas and New Year holiday breaks embody a perfect blend of festive traditions, relaxation, and meaningful connections.



Picture a cozy, snow-covered cabin in a tranquil setting, adorned with twinkling lights and a crackling fireplace. The aroma of holiday spices and freshly baked treats fills the air. The days are spent in joyful festivities, from decorating the tree to sharing meals with loved ones. The holiday season provides a precious opportunity to unwind, whether it's through a quiet walk in a winter wonderland or curling up with a good book by the fire. Engaging in festive activities like ice skating, building snowmen, or attending local holiday events adds a touch of magic.



Crucially, the ideal holiday break also involves reflection and gratitude for the passing year while setting positive intentions for the new one. This might include personal goals, resolutions, or simply cherishing the present moment. Connecting with friends and family, whether in person or virtually, becomes a central theme, fostering a sense of togetherness and love.

Ultimately, the perfect holiday break is a harmonious balance of festive cheer, relaxation, and meaningful connections creating memories which will last forever.

Amanda McConnell, Travel Counsellors.
T: 01482 770540
E: amanda.mcconnell@travelcounsellors.com
W: www.travelcounsellors.com/ amanda.mcconnell

Botterill & Co

Chartered Certified Accountants

We are a modern and professional accountancy practice ideally located to serve businesses in Beverley and the surrounding area.

We utilise modern accounting technology to provide you with a cost effective, professional service.

Our services:

- Annual Accounts
- Tax Planning
- Management Accounts
- Tax Returns
- Company Formations
- Payroll
- Cloud Accounting
- Bookkeeping & VAT

For a free initial consultation please contact us:

Office: 01482 862240

Mobile: 07966 051458

Email: gareth@botterillco.co.uk

Website: www.botterillco.co.uk

1st Floor Offices, 40 Norwood, Beverley, HU17 9EY.

FOLLOW THE DUCK!
See me on the back of our vans

#followtheduck
tweet us a pic when you spot the duck to @whhalmshawLtd



Our Hull and Beverley showrooms are open Monday to Friday 9am-5pm & Saturday 9am-1pm.

Our Hull and Beverley trade counters continue to open Monday to Friday 8am-5pm & Saturday 9am-1pm.

Your Local Bathroom Suppliers, Plumbing Merchants & Glass Specialists with Showrooms in Hull & Beverley.



W H Halmshaw Ltd



W H Halmshaw Ltd, Inspirations Works, Annie Reed Road, Beverley, HU17 0LF.

T: 01482 867142 • www.halmshaws.co.uk

FROM LITTLE ACORNS ROSIE SETS DOWN HER ROOTS

At this time of the year, we enjoy the changes in colour and admire the trees, wondering what stories they would pass on if only they could!!

Whilst walking on Beverley Westwood five years ago with her parents, Rosie, aged 5 picked up a small acorn, asked "What is this mummy?"

Mum replied, "it is an acorn. See the tree over there, hundreds of years ago, it started as a small seed just like this".

Before Mum had finished her sentence, Rosie had picked up some more acorns and said to her mum, "Great, I am going to grow a tree". Rosie took her little acorn seed home and went about the job of "Growing an Oak Tree".

Mum said to Rosie, "Cultivating an oak tree from a humble acorn seed is a long journey, it



will take years and years for the delicate seed to germinate, then establish roots, patience is a virtue as the acorn transforms into a resilient sapling". Rosie replied, "Yes, I want to grow a tree".

Rosie enjoyed the journey, and as the tree went through the growing process, she carefully transferred from one pot to another, then onto a bigger pot until, such was the time it was too big for the garden and needed a more secure place to establish itself, amongst other trees and for everyone to enjoy and watch its growth. Rosie's gift to the environment.

Rachael (Rosie's mum), contacted Beverley Civic Society having learned that only last year in celebration of St John, 1300 trees were planted in Beverley, quite a number of them around the Archery Field.

Sue from the Civic Society said, "Rosie is amazing, the timing is great as we unfortunately lost a couple of trees and we know the ideal place we could locate it".

Rosie Ryan from the Civic Society said, "Rosie who is now only 10 years old, will be able to watch the oak tree (Archie Rose) grow to become part of the landscape throughout her lifetime, and enjoyed by generations to come".

As seasons change, the oak grows, providing habitat for diverse wildlife and fostering a



sense of connection with the natural world. Ultimately, the process is a reminder of the enduring cycles of life and the profound impact individuals can have in nurturing the environment.

Why not follow Rosie's example and grow some trees? Autumn is the ideal time of year to collect acorns, nuts, berries and other tree seeds. Sow in pots and nurture until they are large enough to be planted out to become trees for future generations.

HEARING - IS IT TIME TO HAVE YOURS CHECKED?

Regular hearing checks are crucial for maintaining overall well-being and preventing potential complications associated with hearing loss.

Hearing is fundamental to communication, affecting relationships, work, and daily activities. Timely assessments can detect hearing issues early, enabling prompt intervention to prevent further deterioration.

Untreated hearing loss is linked to cognitive decline, social isolation, and emotional well-being challenges.

Hearing checks are especially vital for older adults, as age-related hearing loss is common but often overlooked. Identifying hearing issues allows for the implementation of solutions like hearing aids, improving the quality of life for individuals affected.

Additionally, hearing health is integral to workplace safety, as impaired hearing can compromise awareness of surroundings.

Regular check-ups, a proactive approach to auditory health, it is important in maintaining a connected and engaged lifestyle.

Enjoy the laughter and cheer this festive season, arrange a hearing check for a better overall quality of life.

Vickers Hearing Clinic, 4 Lord Roberts Road, Beverley, HU17 9BE.

Tel: 01482 867891

Book online: www.vickershearingclinic.com

www.justbeverley.co.uk



VICKERS

HEARING CLINIC



Not only will we be celebrating our **2-year birthday** but we are also celebrating our **new premises!**

We have relocated to **4 Lord Roberts Road, Beverley, HU17 9BE.**

We will be running a celebration offer of a **half price TV streamer** with any bluetooth hearing aid purchase throughout December.

We cannot wait to welcome all customers, new and old, into the new clinic.



www.vickershearingclinic.com

01482 867891



WILSON WHEELS HELP YOU STAY WARM DURING THE FESTIVE SEASON

Staying warm while cycling in chilly weather is crucial for comfort and safety. Layering is key, starting with a moisture-wicking base to keep sweat away.

Insulating layers like fleece or thermal wear provide warmth, while a windproof and waterproof outer layer shields against the elements.

Donning a thermal hat, gloves, and thermal socks helps retain body heat. Adjustable ventilation in clothing allows temperature control. Reflective gear enhances visibility.

Lastly, insulating shoe covers and maintaining proper hydration contribute to a cosy cycling experience in colder conditions, ensuring both enjoyment and protection from the winter chill.



Pop in store to see the new 2023 bike range

WILSONS WHEELS

T: 01482 882881

W: www.wilsonswheels.co.uk E: info@wilsonswheels.co.uk

CHRISTMAS CLUB NOW AVAILABLE

• Adult Bikes • Children's Bikes • Electric Bikes
 • Clothing for all cycling weather • Parts and accessories

89a Grovehill Road, Beverley, East Yorkshire HU17 0EJ
 NOW OPEN: Monday - Saturday 9am - 5pm
 Sunday: CLOSED - Out riding our bikes

BEVERLEY AC - RUNNING TOWARDS 2024

Beverley AC head towards the end of a successful 2023 and look forward to the challenges of 2024. With so many choices of events, there is something for everyone.

The Beaver Trail celebrated its 25th anniversary on Sunday 19th November where runners, walkers and friends enjoyed this popular local trail. It is an annual event inviting anyone to run or walk their choice of 5, 10, 13 or 15.2 miles route, finishing at Beverley Leisure Centre for refreshments.

On Wednesday 13th December Bev AC get festive fit by taking part in the Club's annual Santa Run, accompanying Club members as they enjoy a socially festive run around Beverley before enjoying festive refreshments back at Beverley Cricket Club. Give them a wave and a festive cheer!

The running Santas will be fundraising for the East Yorkshire Food Bank and look out for the Club's tree at Beverley Minster's Christmas Tree Festival!



The Club aims to replicate its' successful Couch25k programme starting in January 2024, completing in May. This popular running programme takes people from being non-runners to completing their first 5kms event. Details will be circulated in the New Year. New members, whatever your age and fitness level, are always welcome and further details about the membership and what the Club has to offer to its members can be found on the Club's website: www.beverleyathleticclub.co.uk

On behalf of the Club's Committee and its members, we wish you all a very Merry Christmas and a happy and healthy New Year!

Merry Christmas and a Happy New Year from the Sportsability Team

Coming in January 2024

Start your New Year's goals with

SPORTSABILITY

FITNESS & WELLBEING STUDIO

Join us for Pilates, Yoga, Personal Training sessions and

LES MILLS
BODYBALANCE

Find out more on Instagram or call us on 01482 229676

NORTHMEN SPIRIT - SHARING IS CARING

On Thursday 16th November we hosted a Launch event for the Bivrost Alfheim limited edition Whisky, with only 350 bottles being available in the country we were pleased to be allocated three cases to distribute to our customers across Beverley and East Yorkshire.

Whilst most other retailers were happy to place their allocations online for sale we insisted on selling our bottles face to face and offering you the opportunity to taste the whisky before purchase. We look forward to sharing this unique whisky with our customers.

We were also delighted to be part of the launch of the Ad Gefrin Tacnbora Islay Cask Limited Edition in October. The Ad Gefrin Distillery is at the heart of a new development in Wooler in Northumberland alongside an Anglo Saxon Visitor Centre.

The first whisky blend was launched in November 2022 and the limited release Cask Edition provided a smokier peated finish to the inaugural edition of the Tacnbora which combines Irish and Scottish Whiskies.



We look forward to being able to bring you the new Whisky Cream liqueur in the very near future.

On Friday 3rd November we hosted the wonderful Twisted Roots / Rum Runner Distillery for an evening of delicious Rum Tasting from East



Yorkshire finest rum distillery, there really is no better way to enjoy a spirit than in the presence of its creator.

At NorthmenSpirit we're committed to bringing you Tasting Events on a regular basis featuring Distilleries from across Yorkshire and

the North. In our final tasting event of the year we will be hosting a Wine Tasting evening (Thursday 7th December) with our very own East Yorkshire Vineyard, Laurel Vines located just 8 miles from Beverley.

Check our Social Media Channels and website for further details.

An excellent opportunity to sample their range of wines



and have your favourite on the table for your Christmas Dinner!

Upcoming Dates

7th December 2023 - Wine Tasting with Laurel Vines Vineyard

Christmas Eve - open from 1100 until 2000

Christmas Day - CLOSED

Boxing Day - open from 1400 until 2000

New Years Eve - open from 1100 until 2000

New Years Day - CLOSED

January 2nd 2024 - CLOSED

Open from 11am Wednesday to Sunday.

2-3 Cross Street, Beverley, East Yorkshire, HU17 9AX.

Web: www.northmenspirit.co.uk

Tel: 01482 259988

Instagram: @northmenspirit

Facebook: @NorthmenSpirit

Christmas Shopping List

Mum - Has a soft spot for the Lightly Spiced Rum from Twisted Roots Distillery / Rum Runner

Dad - Enjoys the Cardamom Gin (with Ginger Ale) from Hotham's Distillers

Big Sis - Loves to try different whiskies, the new Blended Whisky from Ad Gefrin should do nicely

Little Bro - Absolute fiend for his coffee, Spirit infused Coffee Beans (Rum, whiskey or Bourbon) from North Bar Roasting Company

Aunt Julie - She'll enjoy the Nidhoggr Mead Co Traditional Mead made from 100% Yorkshire Honey!

Uncle Dave - Loves discovering new breweries, I know that NorthmenSpirit will have something different that he won't have tried before.



— BAR —
SEVEN93

BAR SEVEN93

- Eight Keg Lines
- Unique Flavour Profiles
- Great Selection of local Wine & Spirits

If you're looking for a unique and memorable beer-drinking experience, BAR SEVEN93 is the perfect destination. www.northmenspirit.co.uk

2-3 Cross Street, Beverley, HU17 9AX.

@northmenspirit @NorthmenSpirit

FANTASTIC FILMS AND WHERE TO FIND THEM

It's beginning to look a lot like Christmas and with precise timing not only are Mariah Carey and Slade songs reactivated but here come the films.

So many that it may be impossible to separate the ones that are so sweet that they should come with a health warning from tasty treats for the soul. Fortunately, that is where Fantastic Films comes to the rescue, although I cannot say that all choices will be full of comfort and joy, they will be a good watch.



*"Information Transit got the wrong man. I got the *right* man. The wrong one was delivered to me as the right man, I accepted him on good faith as the right man. Was I wrong?"*

Every year, there is an argument as to whether "Die Hard" is a Christmas film or just a film set at Christmas. There is no doubt that **Brazil** (available on Amazon Prime Video or the free streaming platform "Plex" with adverts) is not a Christmas film but is set during the season. An Orwellian fantasy from the mind of Monty Python animator Terry Gilliam, the film came out in 1985 the year after a cold and strangely unemotional adaptation of 1984. Gilliam's film on the other hand is scary, disturbing, very funny and yet devastating in equal measures. As a director, he had already cut his teeth co-directing Monty Python and the Holy Grail and was in full control of The Time Bandits but Brazil may just be his masterpiece.

Designed as if a film of the past was looking forward to the future, what is known today as steampunk and set in a dystopian, totalitarian society where the secret police charge you fees for your own interrogation. Jonathan Pryce plays Sam, a harried bureaucrat, with no ambition despite pushing from his grotesque mother. He works in a convoluted world full of unnecessary paperwork where nothing quite works as it should.

Escaping from this humdrum yet scary world into a fantasy where he is a flying knight rescuing his fair maiden. While tasked with correcting another administrative error that has resulted in an innocent man being torn from his family, he spots the girl who he believes only exists in his dreams.

The above description does not do justice to a film which eloquently veers between laugh-out-loud comedic satire and the devastating horror of a fascist state that creates monsters out of good family men. Terry Gilliam is known for his visual flair (especially on a budget) but with Brazil he outdoes himself surrounded by a stellar cast including Michael Palin, Katherine Helmond, Peter Vaughan, Bob Hoskins, Ian Holm and (before Mario) Robert De Niro as a rebellious plumber.

Unsurprisingly, with such a bleak subject, Brazil ran afoul of studio displeasure in the United States who refused to release it as Gilliam intended despite the film winning the LA Critics Award for Best Film of the Year. There followed a battle of wits and words between the director and the

corporate structure but that is a story for another time.

"Those aren't pillows!!"

So I start with a film that could leave you in a state of shock and then I continue with a movie that is not even set at Christmas. It is a film that is overloaded with the right spirit and we Brits don't celebrate Thanksgiving. So I think it fits here.

The late writer/director John Hughes had caught the early 80s zeitgeist with his series of Teen dramas and comedies such as The Breakfast Club and Ferris Bueller's Day Off but before he wrote the beloved Christmas film, Home Alone (we all know that one and this is arguably better), he teamed two great comedy actors in a superb road movie.



Planes, Trains and Automobiles (available on Amazon Prime) stars Steve Martin as an uptight advertising executive trying to make his way home across America for "the holidays" when the weather throws plans into chaos. As he tries to use different modes of transport, he can't shake off an unwanted travelling companion, Del Griffith, a shower ring salesman played by John Candy. Disaster follows disaster and Steven Martin's Neal becomes increasingly exasperated by the loveable oaf with whom he has been forced to travel.

This is one of the best comedies of the 80s as not only do we join two likeable characters on a road trip from hell ripe for laughs but has an emotional depth that you don't realise until a late revelation which always has me in tears until the credits.

I would have said that this is good family viewing but for *that* scene when Neal's frustrations bubble over into an incredible foul-mouthed but hysterical tirade against a car rental agent. As the car rental agent, it gives John Hughes regular Edie McClurg a fabulous payoff line.



*You've been Christmas Caroled, b****!*

Having written *the* Christmas novel, Dickens has been plundered for movies since films began. Whether it was direct adaptations (and is there one better than the Muppets version with Michael Caine?) or jazzed-up modern-day variations, A Christmas Carol has been a huge inspiration for filmmakers. The modern take popped up twice last Christmas with a lot of festive fun to be had.

Star power from Ryan Reynolds and Will Ferrell was the basis of a colourful comedy, **Spirited** (which can be found on Apple TV) tweaking the concept by telling their take after the events of the book and from the spirits' point of view as they

take on the toughest test, an unredeemable soul of a modern businessman. The scale of which you enjoy Spirited does depend on if you are still a fan of the charisma and schtick of both Ferrell and Reynolds as well as its knowing approach to the material and musicals. Yes! Throughout the film, the cast (which also includes Octavia Spencer) knowingly burst into song and dance much to the displeasure of other characters. If you are game for all of that and ready to be sprinkled with colourful festive cheer, this could be the star atop your tree while, after Elf, cements Ferrell as the king of Christmas films.



Perhaps more acerbic, in that uniquely British way, but nonetheless joyous festive fair is **Christmas Carole** (available on NowTV/Sky). Suranne Jones plays the eponymous Carole, a wealthy and ruthless entrepreneur and purveyor of Christmas tat, for whom, success has not made her a better person but worse. Of course, on Christmas Eve, she is visited by three ghosts and here is where this hour-long TV movie elevates itself. Jo Brand is the ghost of Christmas present with Nish Kumar as the ghost of Christmas yet to come but the stars of this show are the ghosts of Christmas past... Morecambe and Wise! As played Jonty Stephens and Ian Ashpitel, these legends of the season are scene stealers. Christmas Carole is a short, sweet romp that is worth seeking out to give you a nostalgic smile on your face.



"Watch the skies, everywhere! Keep looking. Keep watching the skies!"

So if you thought that Brazil was this month's wild card, how about a film that is not set at Christmas but takes place at the North Pole and has snow all around? Like last month's choice, Invasion of the Body Snatchers, **The Thing from Another World** (available on BBC iPlayer) may be black & white, under 90 minutes and made in 1951 but regardless of era is a stone cold (emphasis on cold) classic.

When the residents of an Arctic scientific base, populated by a small crew of scientists and army personnel, discover something mysterious in the ice, they dig it out. Soon the claustrophobic base is the scene for a battle against a monstrous alien.

Technology meant that this Howard Hawkes production had to jettison the original short story's alien that imitates life forms (later rectified in John Carpenter's masterful remake of paranoia and body horror, 1982's The Thing) for an imposing creature, this movie nevertheless redefined the SciFi genre in its time and is a suspenseful romp.

Well, that's a wrap. It has been a pleasure recommending some hidden movie gems to you but this is my final column. Thanks to Just Beverley for finding a place for such self-indulgence. Have a Merry Christmas and the best New Year possible.

Cliff Baillie.

THE BEST PROJECT YOU WILL EVER WORK ON IS YOU

I picked up my copy of this free magazine last month at parkrun. Didn't read it until Sunday morning, but instead of flicking on the TV and reading it, as you do, I sat and read it over a nice cup of tea, from cover to cover.

What a joy, so many lovely stories about people, business' and what's on, which really made me smile. This made me think about the importance of enjoying the simple things in life, finding joy in your day which includes self-care.

This is particularly important in the month of December as we countdown to Christmas, when we are busy, busy, busy.

Self-care seems and feels so very indulgent, but shouldn't it just be the norm, keeping our own 'batteries fully charged'. I saw a great quote in 'The little book of Self-care' by Suzy Reading, 'Self-care is nourishment for the mind, body and soul', which for me fits perfectly as to how we need to look after ourselves in the month of December, but every month!

My self-care always includes a daily walk and spending time in nature, a great way to spark those happy hormones and of course parkrun at Beverley Westwood and 5KYourway on the last Saturday in the month.

5Kyourway is a community support group that inspires and empowers people impacted by cancer to live an active and fulfilling lifestyle. This has changed my life, I never imagined I would take up running at my age and after a cancer diagnosis, but here I am doing it, my way.

The words on the T-shirts & sweatshirts say it all; powerful words on the front and back. On the front is 5KYourway, the name of the charity but it's something everyone could aspire to.

I never imagined I was one of those people who would do parkrun, but I am now, and I love it, going every week.

On the back 'The best project you will ever work on is You' I love this, these are my power words, so as we countdown to Christmas with our 'To do lists' of presents to buy, cards to write, food we need, work projects, online shopping for gifts, whatever it is, add a little time for yourself every day. Find the words and things that will inspire you.

What are the ways that you can nourish your mind, body and soul? I've started mine, will you? Have a great Christmas. Allyson x

And lastly..... saw an article about applying to become a parkrun coffee ambassador, I've never been one to do these things, but all I had to do was explain my coffee choice (flat white) and why I loved parkrun? a gift for me, as I love coffee and parkrun, the words came easily,

explaining what parkrun (of course this included what 5KYourway and Move against Cancer) has done for me and I won.

Three days later, I had a delivery of a very flash Delonghi coffee machine, Unbelievable.

This for me is a metaphor for having a go.



CIVIC SOCIETY CALENDAR 2024

Members of Beverley Civic Society have teamed up with students of East Riding College Beverley Campus to produce the 2024 calendar.

The theme this year is 'A Window on Beverley', and the students studying media produced 13 fabulous photographs which make up next year's calendar. Hull and East Yorkshire Mind was chosen by the students as this year's charity, and as in previous years, the funds from the sale of the calendars will be split between the charity and the Civic Society.



Copies of the calendar are priced £8 (plus £1 for postal envelope).

Calendars are available at the Tourist Information Centre and various retail outlets around Beverley, by calling **01482 866252** or emailing goodtymeshull@hotmail.com.

You can place an order by visiting the website: www.beverleycivicsociety.co.uk and going to the contact page. Payments by credit or debit card, cash or cheque made payable to Beverley Civic Society.

The photographs are taken by Vernon Blanchard, and show the prize winning students Jamie Horsley (1st prize) and Euan Drakeley (2nd Prize) along with John Ellerington from the ER College.

Tc Patisserie

We are now no longer a café, but still make our own patisseries and Tc Patisserie is now a French food shop to compliment our own products.

We have a daily selection of freshly made croissants, breads and patisseries.

We make reheat at home meals which can be bought over the counter or pre ordered, via our mailing list or messenger.

We can cater for any occasion, buffets, dessert tables or full 3 course meals can be arranged.

We are open Tuesday-Saturday 9am - 4pm.

10 Lairgate, Beverley, HU17 8EE
Tel: 01482 860884

THE FESTIVE SEASON AT EAST RIDING THEATRE

ERT is set to delight audiences with its Christmas production, 'Toad on the Wolds,' proudly sponsored by Lairgate Financial.

This story details Toad's escape from prison, after a desperate letter from his uncle urges his imminent departure for East Yorkshire, where his ancestral home, Toad Manor, is under threat from the evil weasels.

This spirited adventure is a delightful concoction of humor, mystery, and infectious Christmas spirit, promising to captivate hearts across all generations from 8 to 108.

From the 6th to the 31st of December 2023, this action-packed spectacle, written by the



talented Gordon Meredith and skillfully directed by Richard Avery, is set to be an unmissable highlight of the holiday season.

Mark your calendars as we invite you to secure your tickets for this enchanting adventure.

Tickets are £24 standard, £23.00 Concession (Over 65), £14.00 Child (Under 16).

To catch a glimpse of what lies ahead and to reserve your seats, visit our website at www.eastridingtheatre.co.uk.

MEET THE CAST

Follow the adventures of Toad, Mole, Ratty and Badger as they race against the clock to beat the evil weasels.

- Hannah Levy** as Toad
 - Alice Rose Palmer** as Ratty and Field Mouse 2
 - Clive Kneller** as Chief Weasel / Wesley Weasel
 - Malcolm Tomlinson** as Badger
 - Peter McMillan** as The Gaoler / Otter / Ferryman / The Clerk
 - Neil King** as Lifer/Postman / Uncle Croaker / Field Mouse 1 / Ferret Cop 2
 - Will Anderson** as J Ferret Warder / Rabbit / Ferret Cop
 - Alice Gold** as Washer Woman / Housekeeper
 - Alison Shaw** as Mole & Field Mouse 3
- Produced by **Sue Kirkman**

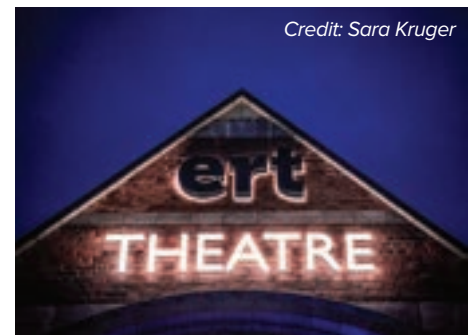
Merry Christmas from all of us at ERT

As the festive lights twinkle and the joyous melodies of the season fill the air, we at East Riding Theatre reflect on the incredible year we've shared with our amazing community.

We would like to wish our audience members, community partners, local businesses, and sponsors a merry Christmas and a prosperous New Year. Thank you all so much

And a special ovation goes to our dedicated volunteers - the unsung heroes behind the scenes.

Your passion, hard work, and commitment have helped to transform ideas into realities, and your contributions have set the stage for unforgettable experiences.





Memberships

EAST RIDING LEISURE



MERRY Fitness

15 months membership for the price of 12

6 months membership for the price of 5

15 months membership from as little as £150*

6 months membership from as little as £62.50*

INVEST IN YOUR health and wellbeing THIS CHRISTMAS



Available until 31 December *Afternoon Premier

For more information visit eryc.link/MerryFitness



EAST RIDING
OF YORKSHIRE COUNCIL

eastridingleisure.co.uk
@ERLeisure
/EastRidingLeisure
EastRidingLeisure
@ERLeisure
er_leisure

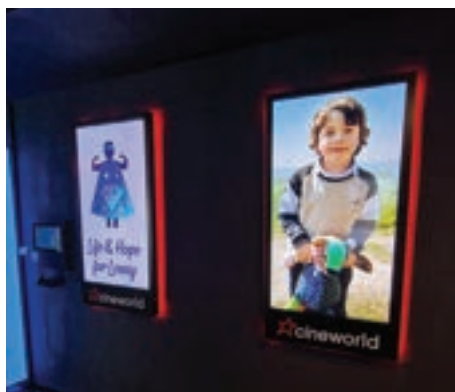
CAN YOU FIND LENNY'S CHRISTMAS TREE?

Lenny has been a busy boy, he recently reached his target to get £16k for his new electric wheelchair. Lenny sends a big "THANK YOU" to everyone.

Lenny has a condition, "Duchenne Muscular Dystrophy" DMD, a life-limiting condition, which will cause his muscles to degenerate and stop functioning. There is currently no cure for this condition.

Lenny will need an electric wheelchair in the near future, and to raise funds he has completed:

- A sponsored trike ride around Roundhay Park
- A sponsored walk in the Peak District - he walked and his mum carried him a short distance.
- A sponsored swim (1 week after he learnt how to swim)
- A cinema event, where we watched Super Mario and the cinema who also did a bake sale for Lenny. His photos were on the big screens like a cinema poster



- A santa walk/push
- A couple of our friends walked the three peaks in a day along with:
 - Raffles
 - Auctions of watches - Joe Green played a huge part in this @joeycool on Instagram
 - Donations
 - Bake sales

Lenny and his friends fulfilled another ambition to decorate a Christmas Tree at the Beverley Christmas Tree Festival, can you find his tree? When you do, don't forget to vote for it!

The Christmas Tree Festival is a dazzling celebration of creativity and festive spirit, where



communities come together to adorn trees in a myriad of enchanting decorations. Each tree becomes a unique masterpiece from traditional ornaments to innovative handmade crafts, and Lenny's has been decorated in the DMD colours.

Families, schools, and businesses enthusiastically participate, turning the event into a visual feast that captivates visitors.

The festival not only spreads joy but also fosters a



sense of community, as people share their artistic expressions, creating a magical atmosphere that marks the beginning of the festive season.

See if you can spot Lenny's tree... if you have a moment to learn more about Lenny and DMD, think about the effort he has put into decorating a Christmas tree for your pleasure and delight.

You can help Lenny fulfil more goals as he continues on his journey.

Lenny's IG handle: @lifeandhope4lenny

Vote for Lenny's Tree "84"

Lenny's message: "Merry Christmas"

MAKE A DATE TO JOIN IN WITH BEVERLEY'S CHRISTMAS ACTIVITIES

The Made in East Yorkshire Christmas Market will lead up to the Festival of Christmas weekend.

Sponsored by The Beverley Arms Hotel, in its third year, the Made in East Yorkshire Christmas Market will celebrate the best produce that East Yorkshire's local businesses have to offer, taking place in Saturday Market from Wednesday 6th December, to Friday 8th December, 10am-4pm. It will also include festive entertainment and activities to get everyone in the festive mood.

On Saturday 9th December the weekly Saturday Market will have a Christmas theme and the Beverley Festival of Christmas is back on Sunday 10th December 2023, 10am-4pm. The Beverley Festival of Christmas in its 27th year, will see Beverley turn into a Christmas shopping wonderland, with 120 stalls offering everything you need to have yourself a merry Christmas. Throughout the whole of Beverley you can join in the celebrations, where Santa and his special reindeer will of course be joining in the and there's plenty to keep the whole family entertained with traditional fairground rides, birds of prey on display, and the sounds of traditional brass bands.

If that isn't enough, Flemingate will entertain everyone with its Festive Weekend, including American Miniature Horses, Tipi Christmas, live music, funfair rides and a giant snow globe over the weekend from 9am-4pm. Quite simply there is no better way to get into the Christmas spirit and prepare for the big day.



Beverley Minster Christmas Tree Festival

125 real fir trees will fill this magnificent, medieval church with the aroma of pine and thousands of twinkling tree lights. The decorations for each tree have been uniquely created and crafted by local groups.

Sip a hot chocolate or mulled wine amongst the trees. You can even make your own Christmas wreath at specially organised sessions on 6th, 7th, and 8th of December (booking ahead is essential).

The Christmas Tree Festival is open for 10 days from 1st - 10th December. Admission for adults is £5, accompanied children are free. Purchase all tickets on the door.

For more information:



WHAT'S ON IN BEVERLEY



BEVERLEY

Tell us about your event!

Email: info@justbeverley.co.uk

Telephone: **01482 679947**

Until Sunday 31st December

Beverley Reindeer Rampage

A self-guided Christmas trail around Beverley's shops, cultural sites and eateries to round up Santa's reindeer herd. FREE.

Friday 1st December - Sunday 10th December

Beverley Minster Christmas Tree Festival

125 real fir trees in Beverley Minster. Tickets: £5 per adult, accompanied children are FREE.

Saturday 2nd December

East Riding Concert Orchestra Christmas Concert

St Mary's Church, 7.30pm. Tickets online or Beverley TIC.

Lights & Sounds Service

St Michael's Church, Cherry Burton, 4pm. £5 Adults, Children Free.

Christmas Carols

Beverley Minster.

Tuesday 5th & Tuesday 19th December

Singalong Memories

Walkington Methodist Church schoolroom on alternate Tuesday afternoons 2pm to 3.45pm. We sing along to original recordings from the 50s, 60s and 70s. Large, easy to read words are displayed onscreen. You don't need a great singing voice - just enthusiasm. Refreshments are included in the charge of £3 per session.

Wednesday 6th to Sunday 31st December

Toad on the Wolds

East Riding Theatre. £24 Adults, £23 Concessions, £14 under 16s.

Wednesday 6th to Friday 8th December

Made In East Yorkshire Christmas Market

Saturday Market, Beverley, 10am to 4pm. FREE parking: There will be a free park and ride bus service from Beverley Racecourse to Beverley town centre on the Wednesday, Thursday and Friday. Visit www.beverleyfestivalofchristmas.co.uk for more details.

Thursday 7th December

Christmas Rocks Remarkable Rock Choir

St Mary's Church, 7.30pm. £12 Adults, £4 16yrs & under.

Sunday 10th December

Beverley Festival of Christmas

Discover over 120 stalls offering everything you need to have yourself a merry little Christmas. Town Centre, 10am-4pm. FREE.

Friday 15th December

Carol Concert, Beverley Chamber Choir

St Mary's Church, 7.30pm.

An Audience with Jade Helliwell

Jade Helliwell is coming to Beverley for a special intimate Christmas show. St Nicholas

Church, Beverley HU17 0QP. 7.30pm-9.30pm.

Saturday 16th December

In Dulci Jubilo, The York Waits & Ebor Singers

St Mary's Church, 12noon. £16/£10 from National Centre for Early Music, York.

Handel Messiah, East Riding County Choir

Beverley Minster, 7pm-9.30pm. £20 Reserved, £12 Unreserved.

Saturday 16th December - Saturday 30th December

Pinocchio - A Panto Adventure

Parkway Beverley, Flemingate, HU17 OPW. Tickets: £15 standard. £13 concession. £48 Family ticket (2 adults, 2 children).

Performances:

Saturday 16th - 12pm and 4pm.

Sunday 17th - 12pm and 4pm.

Saturday 23rd - 12pm and 4pm.

Sunday 24th - 10am, 1pm and 4pm.

Tuesday 26th - 12pm and 4pm.

Wednesday 27th - 12pm and 4pm.

Thursday 28th - 12pm and 4pm.

Friday 29th - 12pm and 4pm.

Saturday 30th - 12pm.

Sunday 17th December

Prelude to Christmas, Beverley Male Voice Choir

Toll Gavel Church, 2.15pm.

Beverley Anglo-French Society

Interested in French language and culture? The Beverley Anglo-French Society meets on the third Sunday of the month. For the 2023-24 programme, venue and more information please visit: www.beverleyanglofrenchsociety.org.uk

Thursday 21st December

The Darker Side of Beverley

Upstairs at The Monks Walk, 7.30pm. Performance/spoken word local history, spooky goings on, followed by a spooky stroll around the Minster quarter.

Wednesday 27th December

Christmas Ghost Walk

Join us for an evening ghost walk through historic Beverley! Toll Gavel, Beverley, HU17. 7.30pm-9pm.

THREE FOR CHRISTMAS QUIZ

What address do you use to send a letter to Santa?

123 Elf Road, North Pole.

What band had the hit single 'Last Christmas'?

Wham!

True or False: Denmark sends a Christmas tree to London every year.

False it's Norway.

NORWOOD NITES

Community Cinema @ Norwood Church

We warmly invite you to join us again or, for the first time, to our monthly film night. **FREE ADMISSION!** A new programme running **October '23 - December '23.**

Due to Copyright we are only allowed to display film titles on the Church premises. Refreshments & Raffle from 6.30pm.

Films start at 7pm. Films shown in the hall to the rear of the Church.

Monday 11th December at 7pm

In a story of profound faith revered by much of humanity, one young woman struggles with the destiny for which she is chosen - to give birth to the Son of God - a deeply moving journey told in A Nativity Story.

Ring or message **07903 136996** for more film details. If you require transport to and from this event please contact Beverley Community Lift on Tel: **01482 868082.**

PINOCCHIO QUIZ

The true answers were:

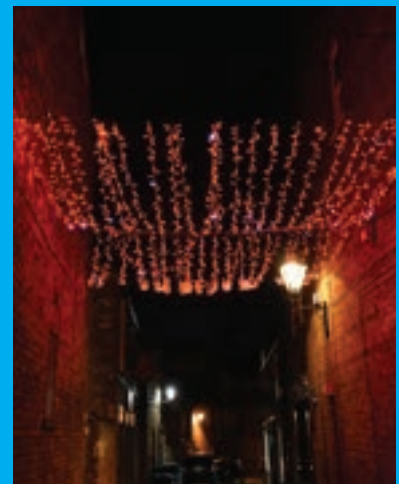
2, 4, 5, 7, 9, 11, 13, 14, 16, 17, 19, 20, 21, 23

The lies were: **1, 3, 6, 8, 10, 12, 15, 18, 22**

There were more true answers so his nose stayed the same size! How many did you get right?

WHERE IN BEVERLEY?

It's the Christmas lights on Well Lane



ert

EAST
RIDING
THEATRE

TOAD ON THE WOLDS

For ages
8 to 108 !!

ERT's
Christmas Show
is proudly sponsored by

LAIRGATE
FINANCIAL

written by **Gordon Meredith**
directed by **Richard Avery**

The Intrepid
Toad and his friends
head north this winter
and try to save the
family home from the
Wily Weasels of
the Wolds

ERT's
Family Christmas show

inspired by Kenneth Grahame's *The Wind in the Willows*



Beverley Town Council
Making a difference



EAST RIDING
OF YORKSHIRE

EAST RIDING THEATRE

10 Lord Roberts Road | Beverley | East Yorkshire | HU17 9BE
01482 874050 | boxoffice@eastridingtheatre.co.uk
eastridingtheatre.co.uk

Wed 6th to Sun 31st Dec 2023

Tickets: £24 / £23 Conc. / £14 Child (Under 16)
7.30 pm and selected matinees at 2.30 pm

FLEMINGATE
BEVERLEY

Flemingate
Festive Weekend

SATURDAY 9TH & SUNDAY 10TH DECEMBER

10AM - 4PM

TIPI
CHRISTMAS
AT FLEMINGATE

AMERICAN
MINIATURE
HORSES
FROM
THERAPY

VISITS FROM
STAR WARS
CHARACTERS
SENTINEL
SQUAD.UK

FUNFAIR
RIDES


JUST
£2
FOR 3 HOURS
PARKING


LIVE
MUSIC &
ENTERTAINMENT


Our Giant Snow Globe is back!

Grab your family and friends for the perfect festive photo taken by our professional photographer inside our fantastic Snow Globe!

FANTASTIC FOOD & DRINK • PERFECT PRESENTS & GIFTS

 @FlemingateBev

 FlemingateBev

 FlemingateBeverley

FLEMINGATE.CO.UK